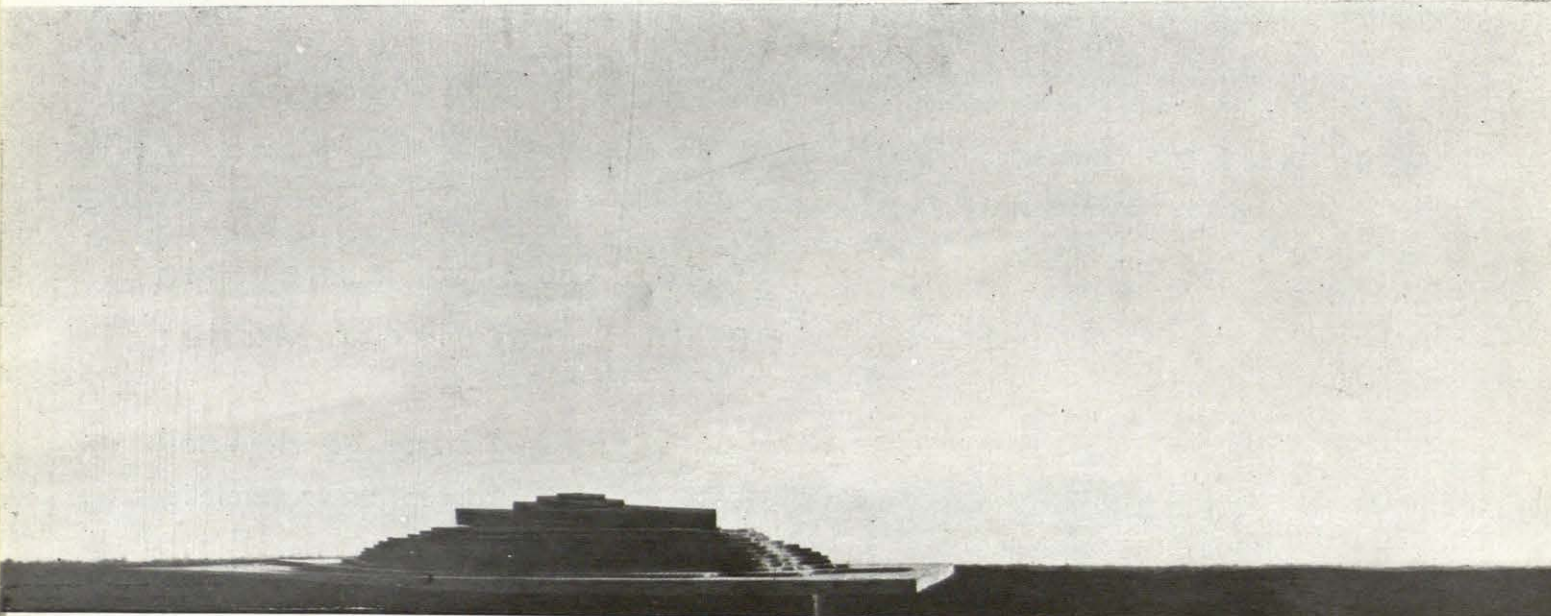
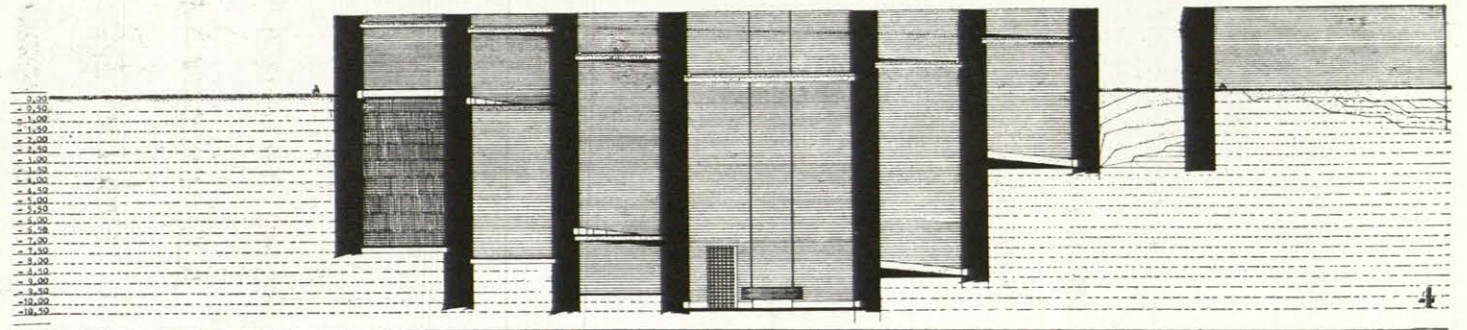
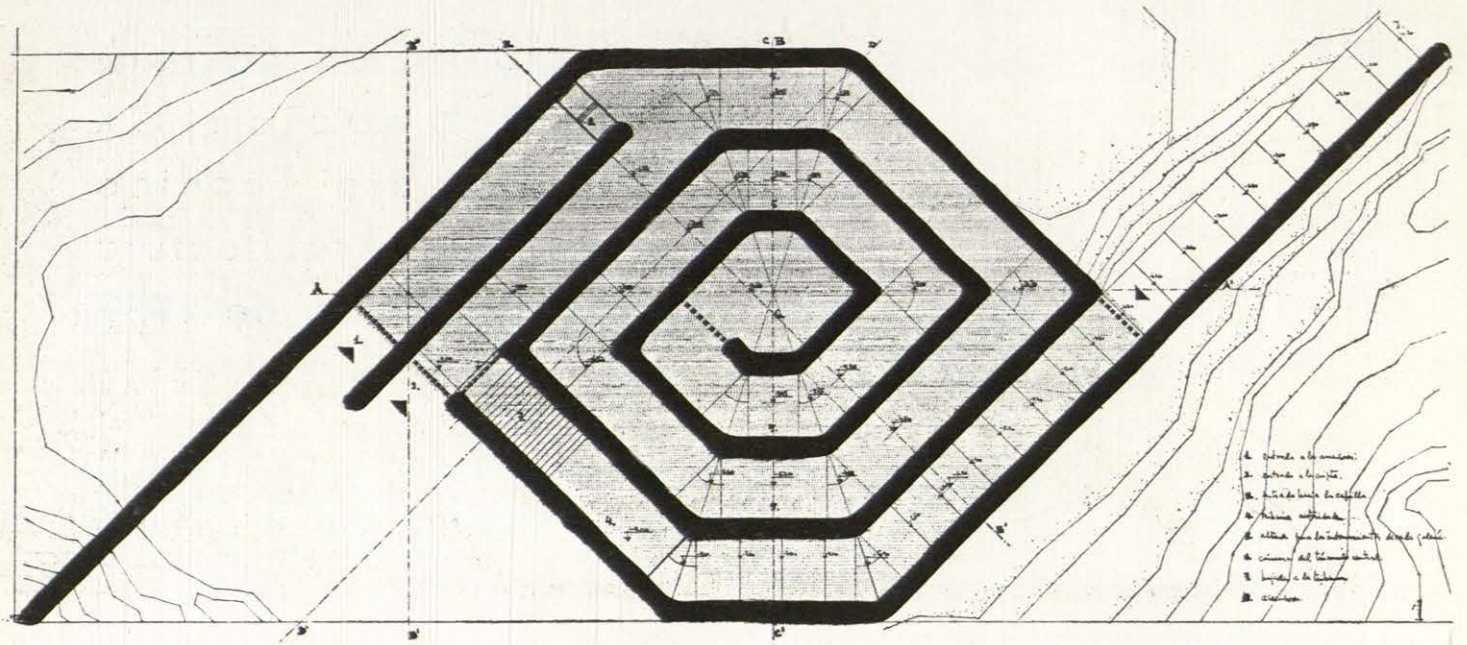
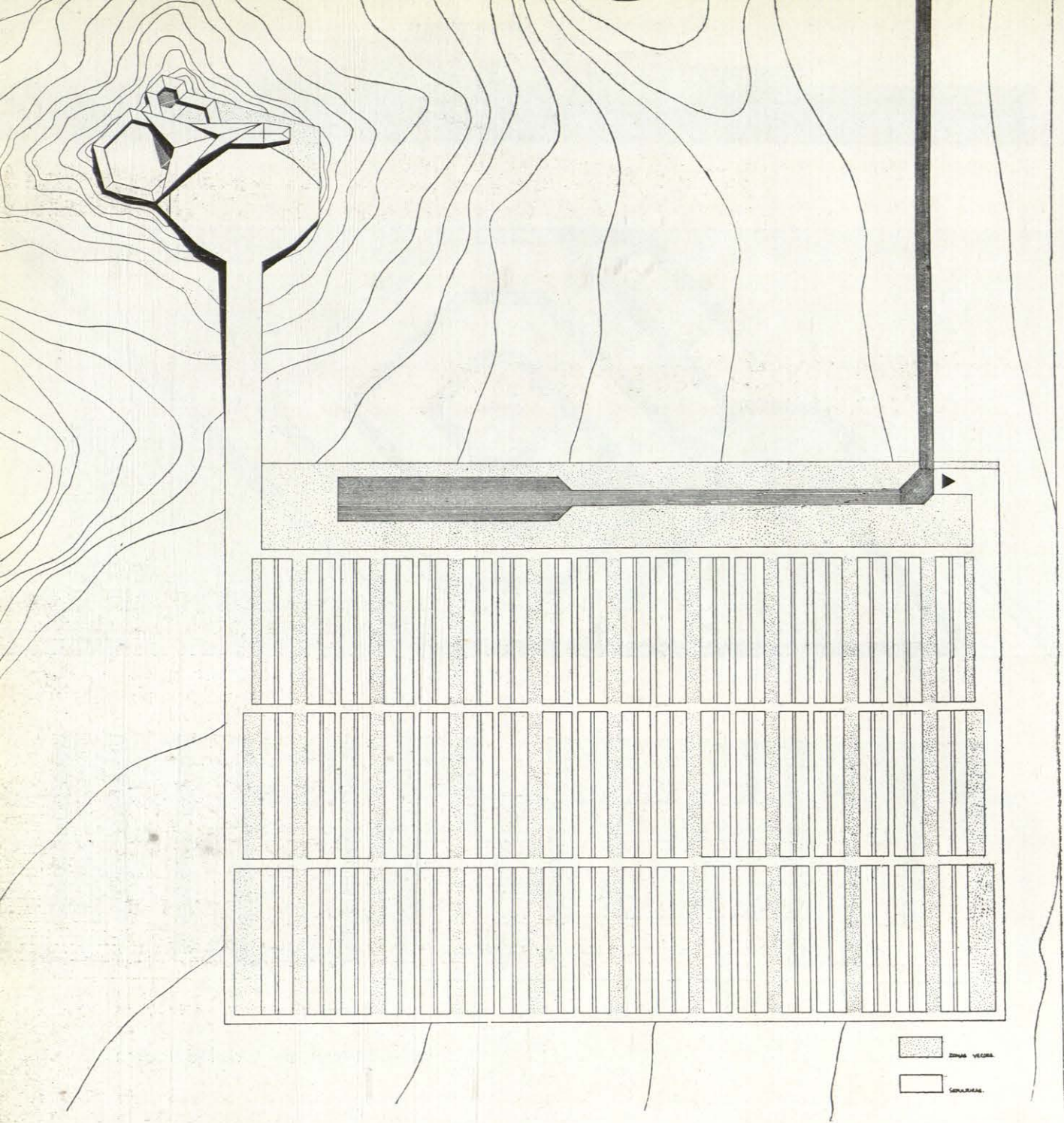


Proyecto fin de carrera
de la promoción CX
de la Escuela Técnica
Superior de Arquitectura
de Madrid, Julio de 1959

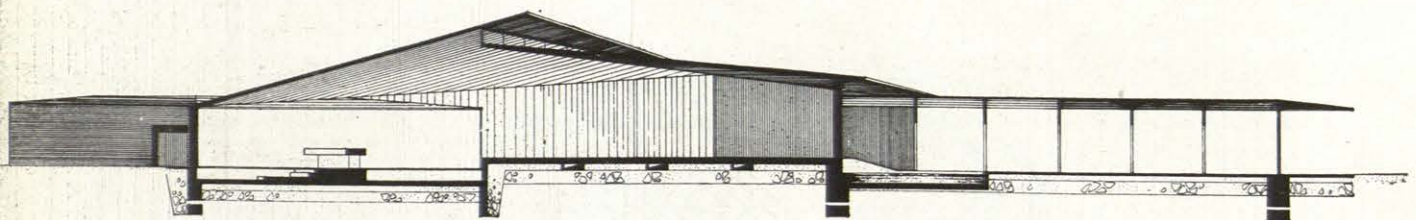
Tema: Capilla Funeraria
en un Cementerio Militar

Profesor de Proyectos
Pascual Bravo Sanfeliú



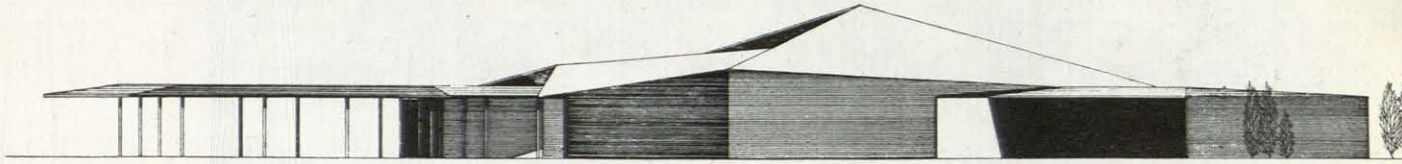


Planta General

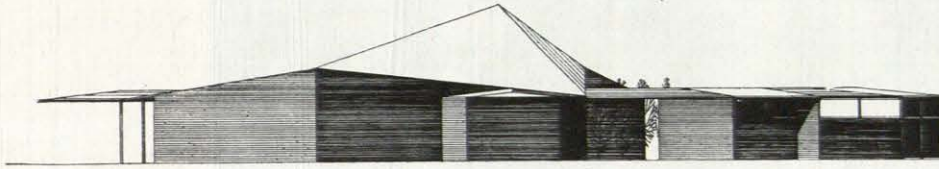


Secciones

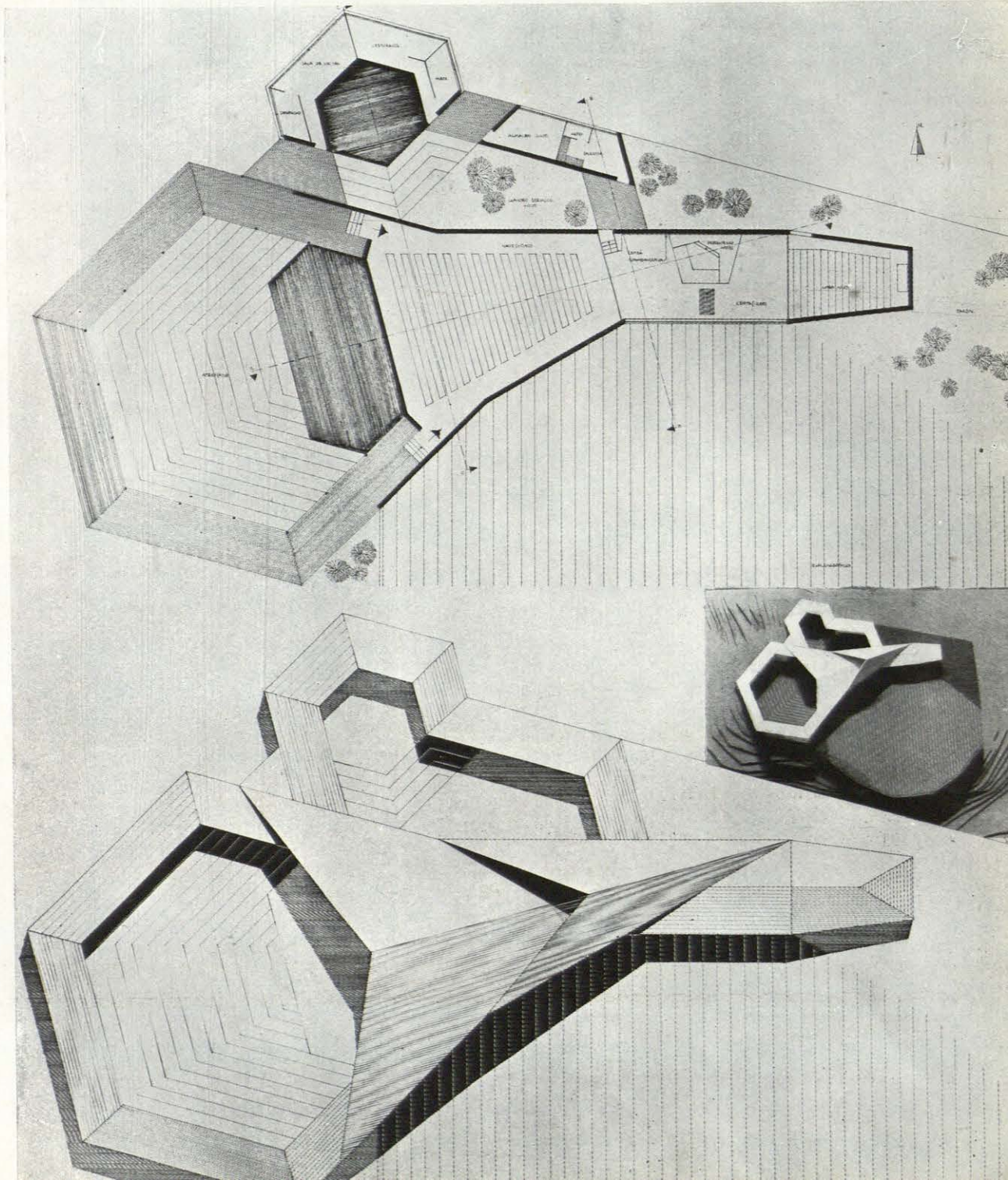




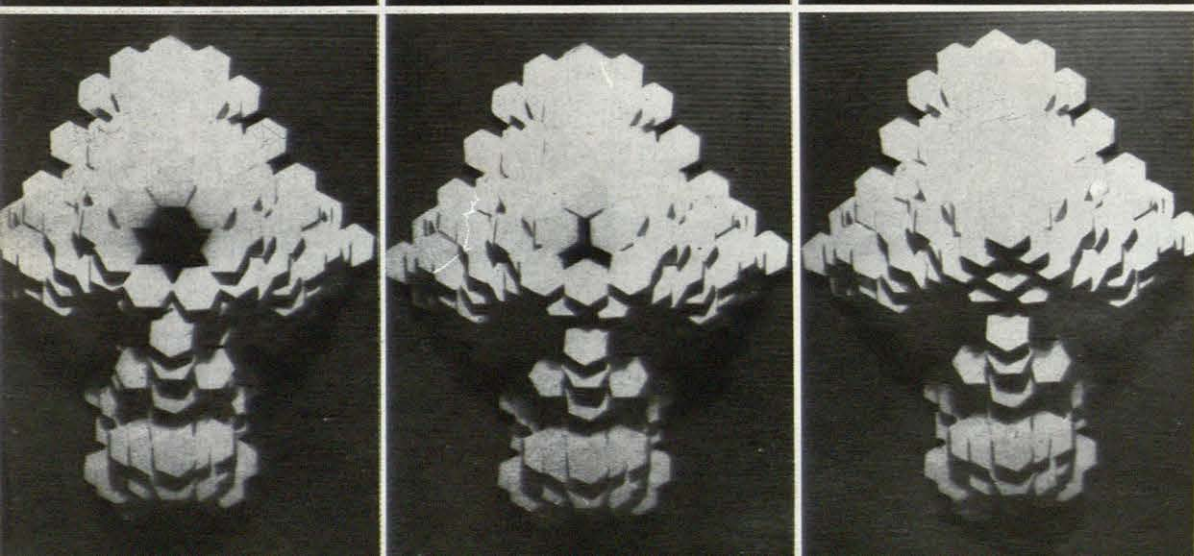
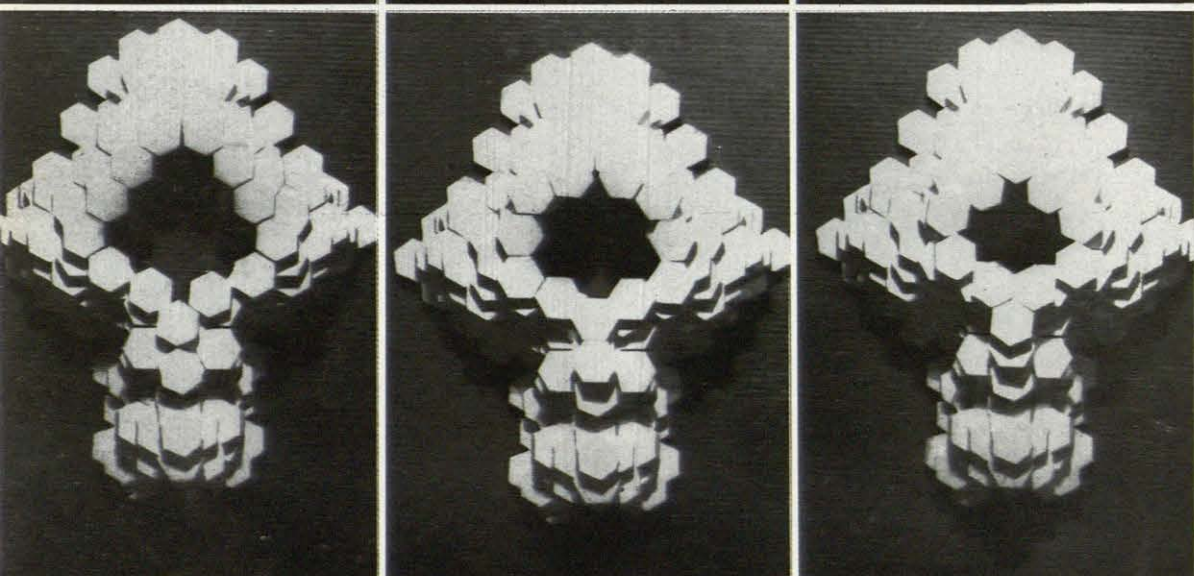
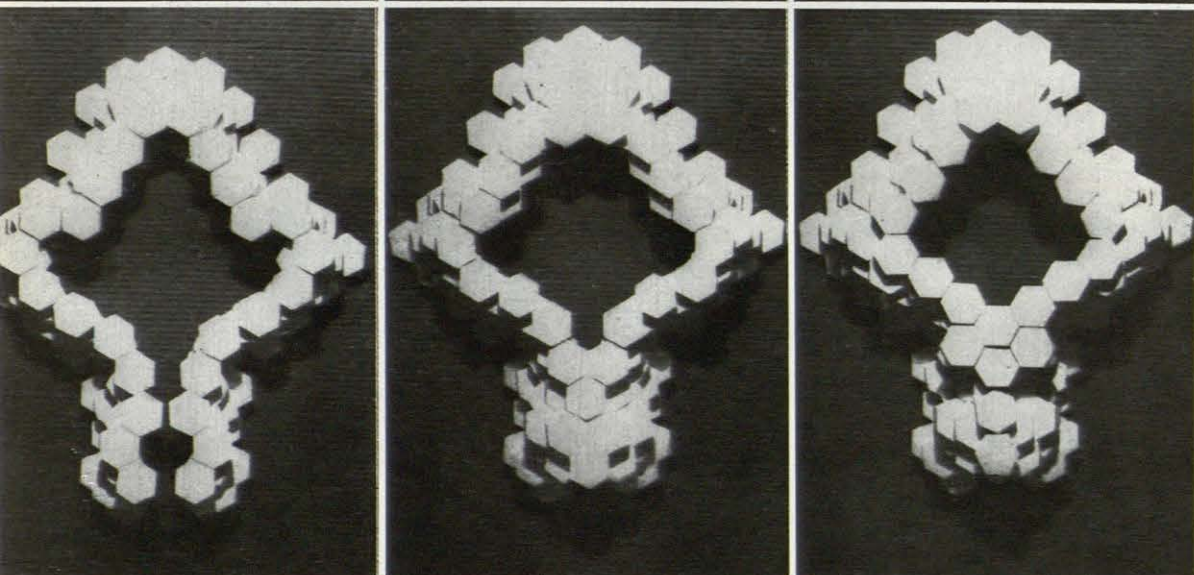
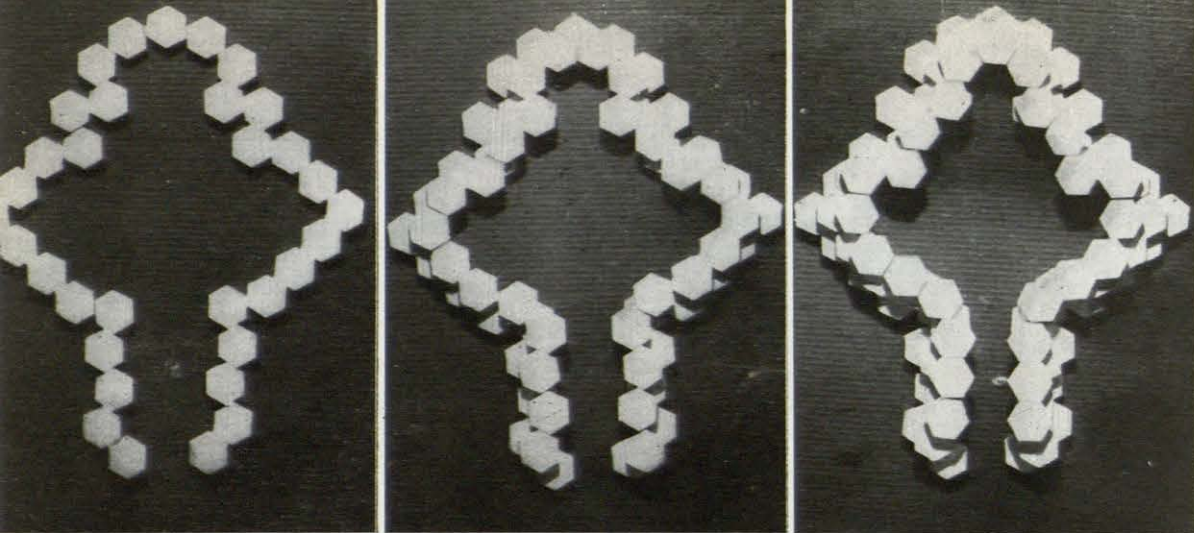
Alzados



Juan Antonio
Ridruejo Brieua

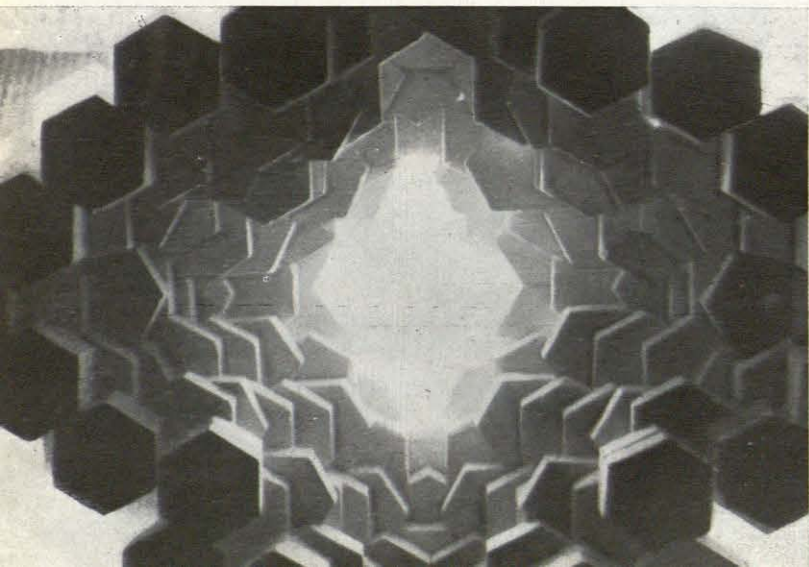
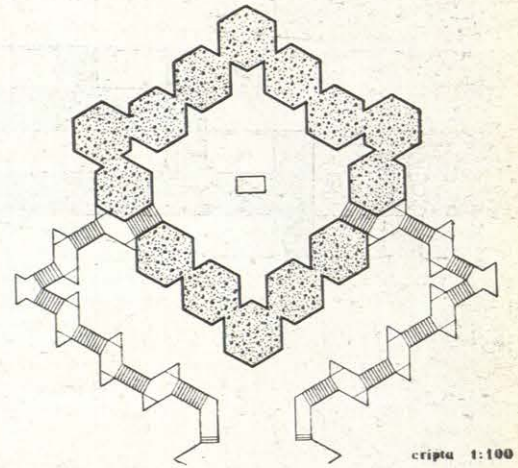
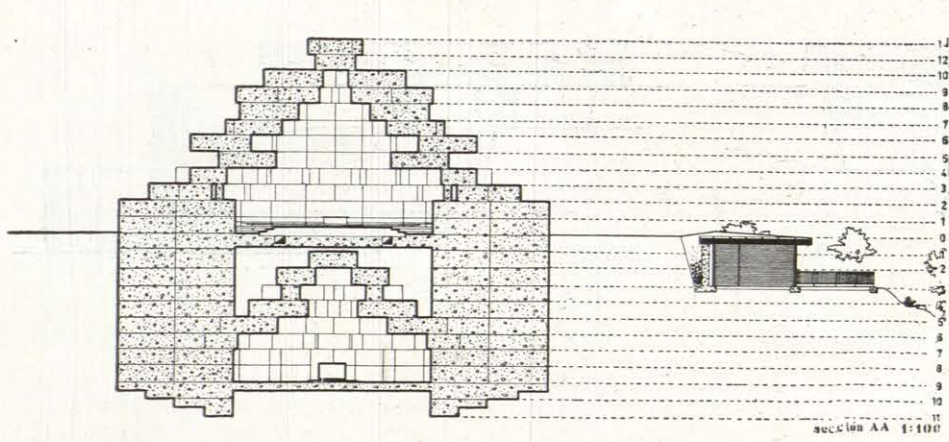
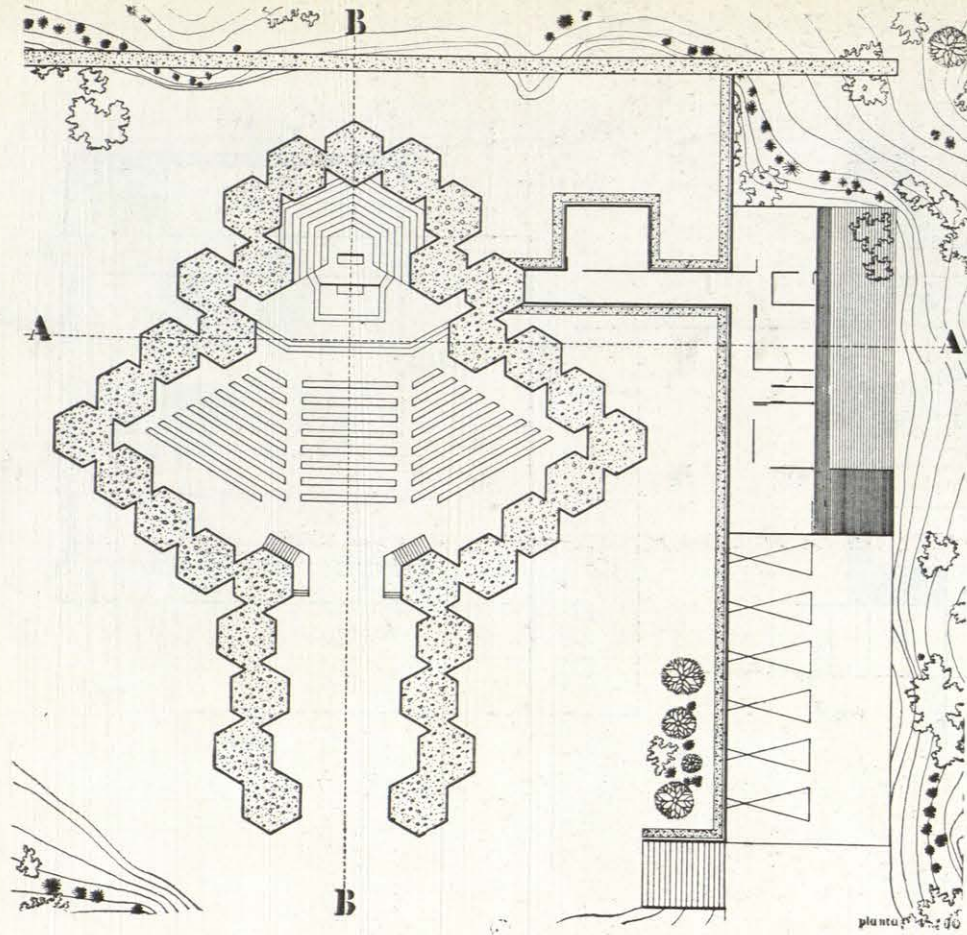


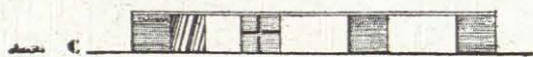
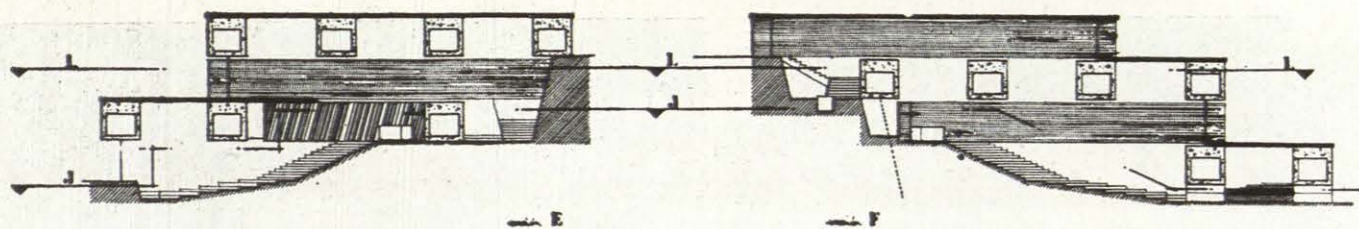
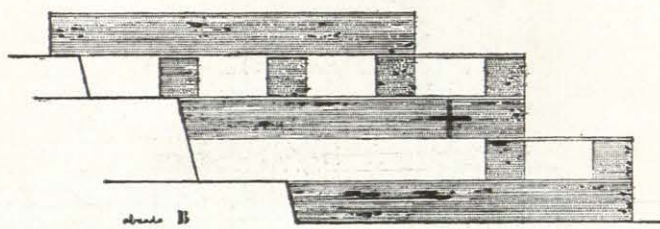
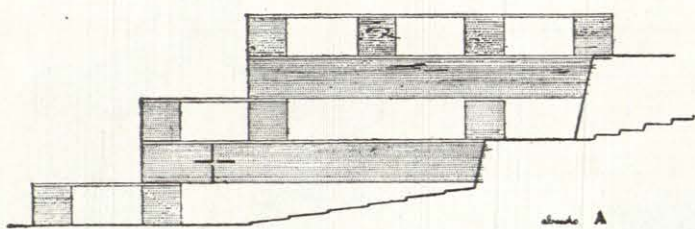
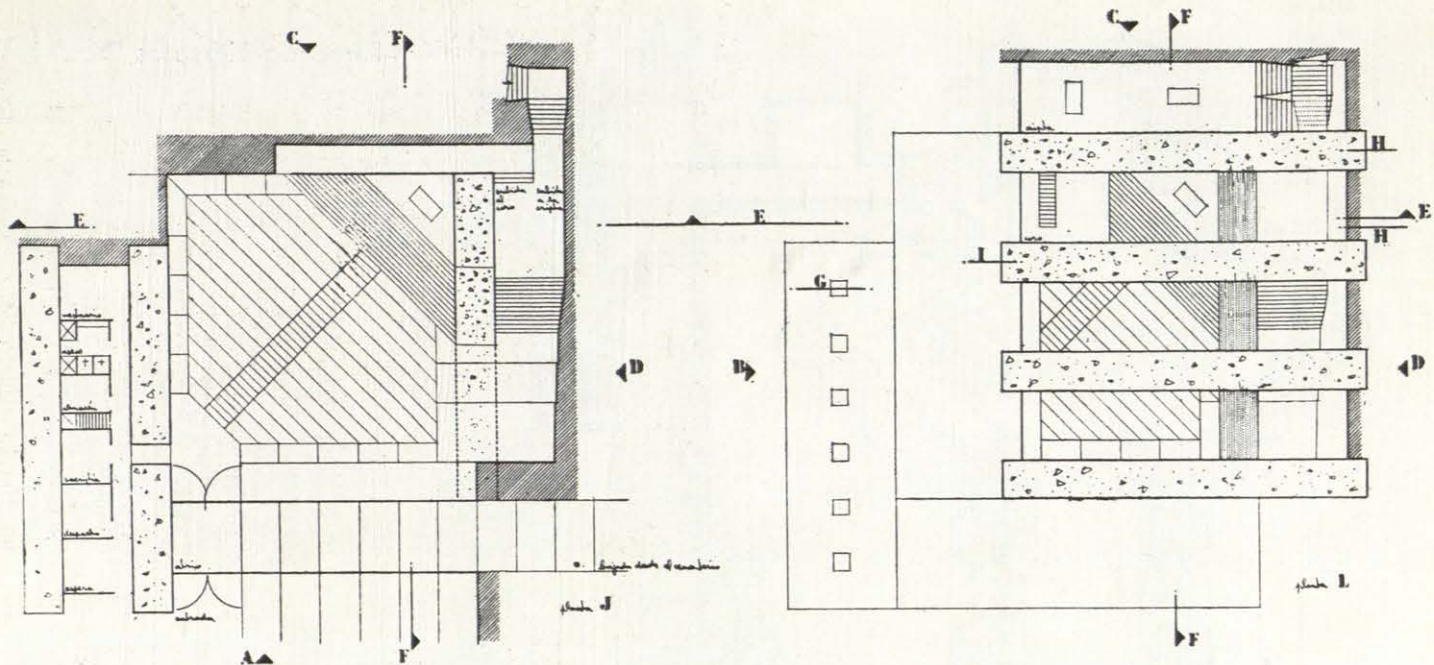
Plantas



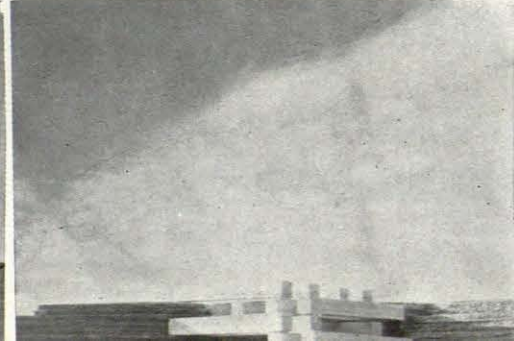
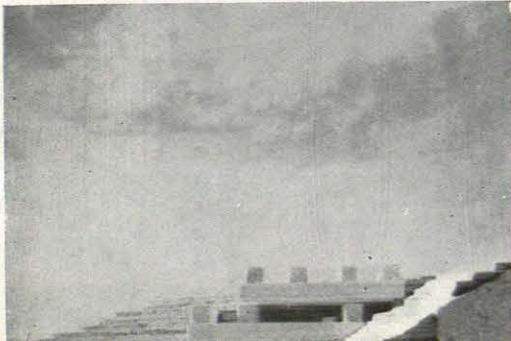
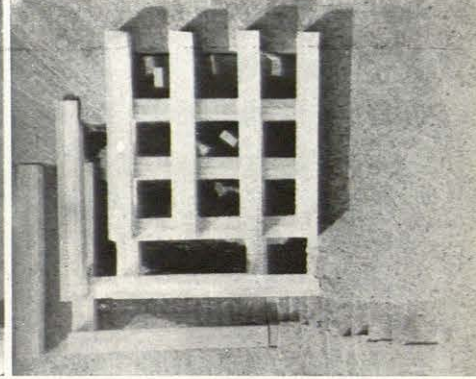
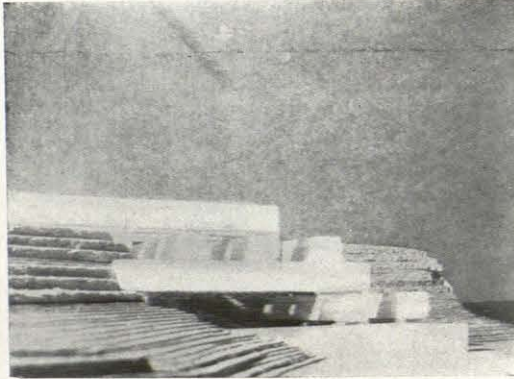
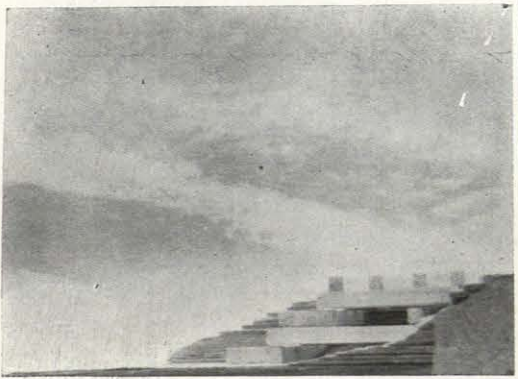
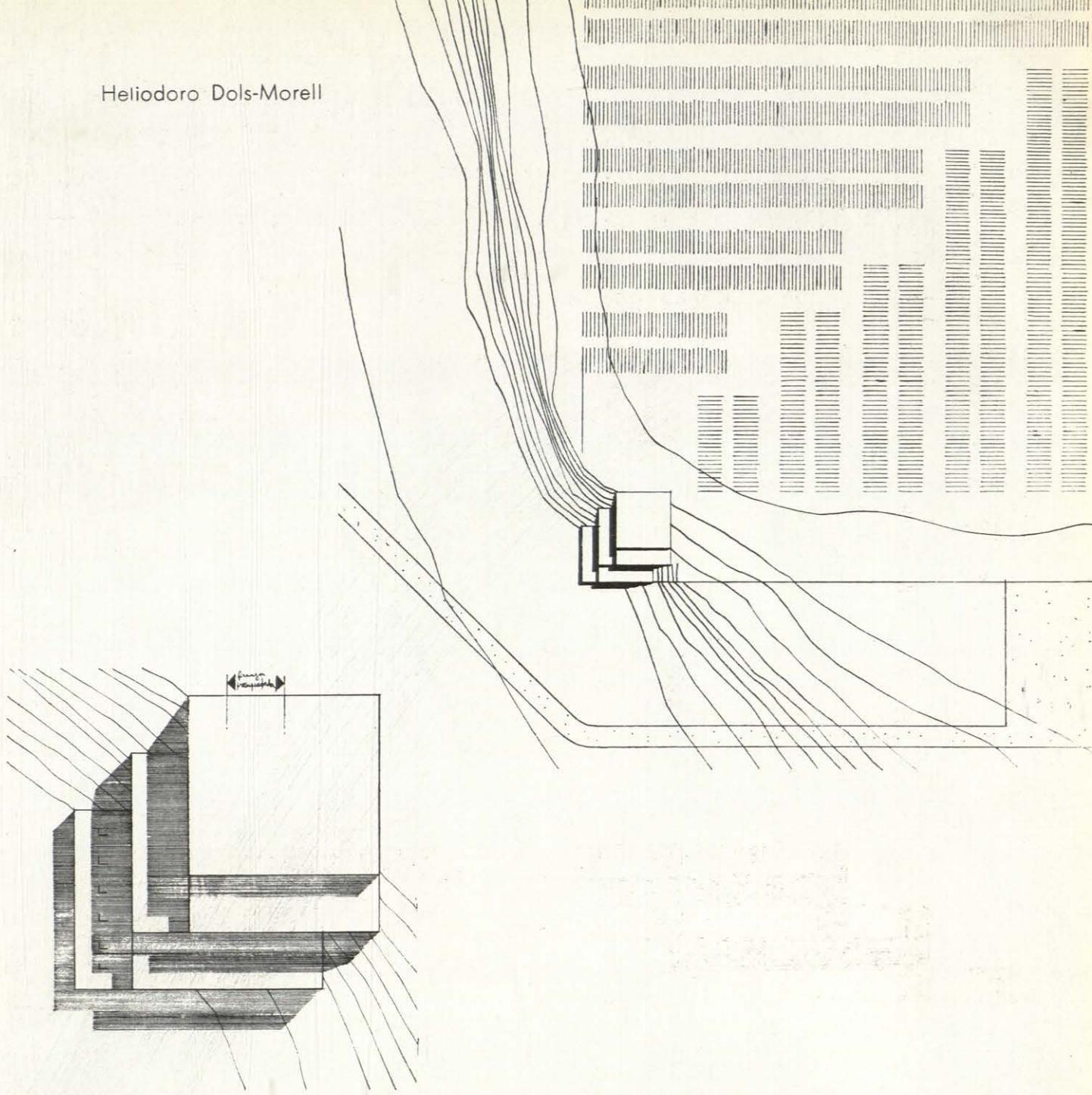
1	2	3
4	5	6
7	8	9
10	11	12

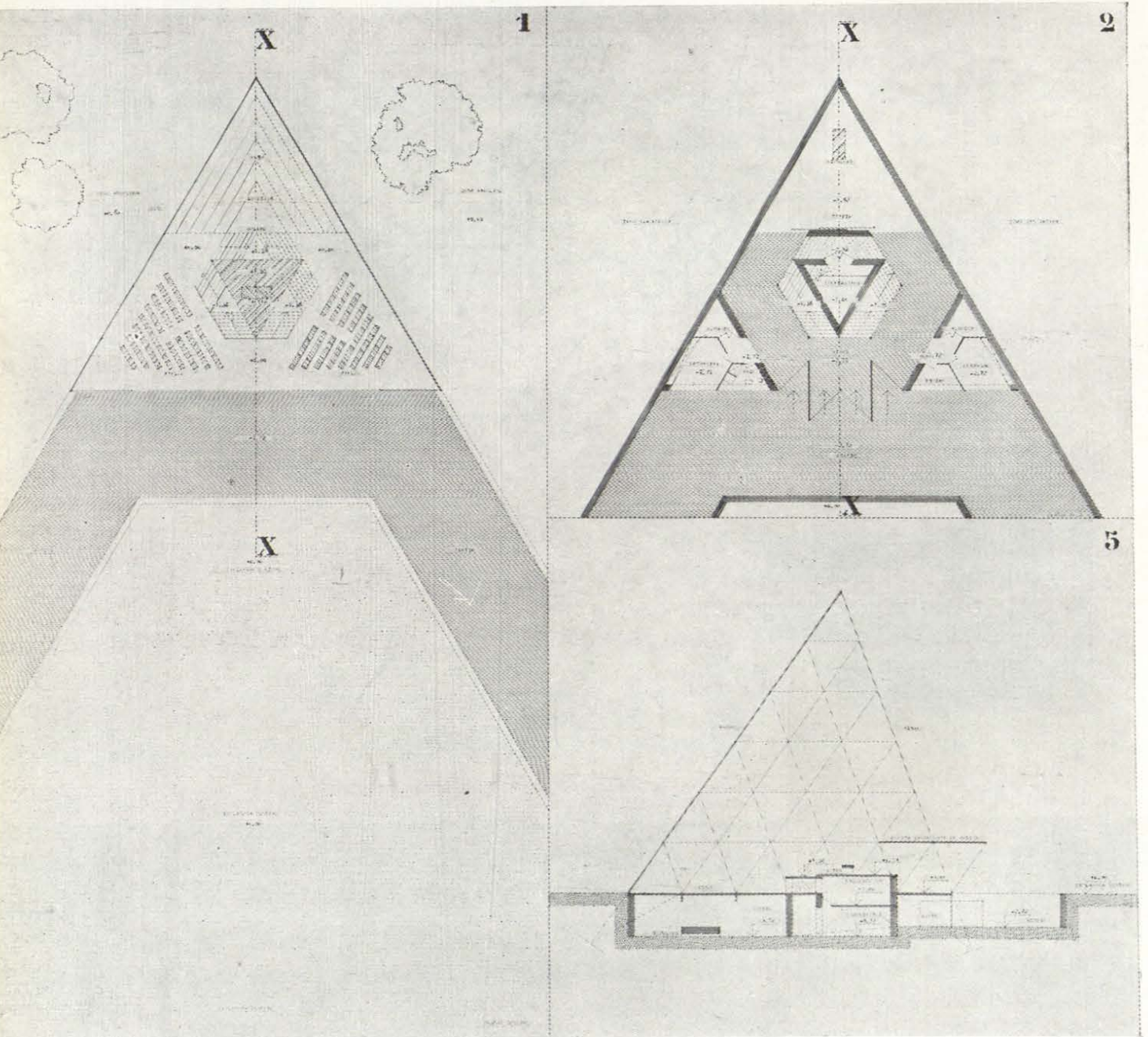
Los números indican hileras horizontales de bloques de hormigón.

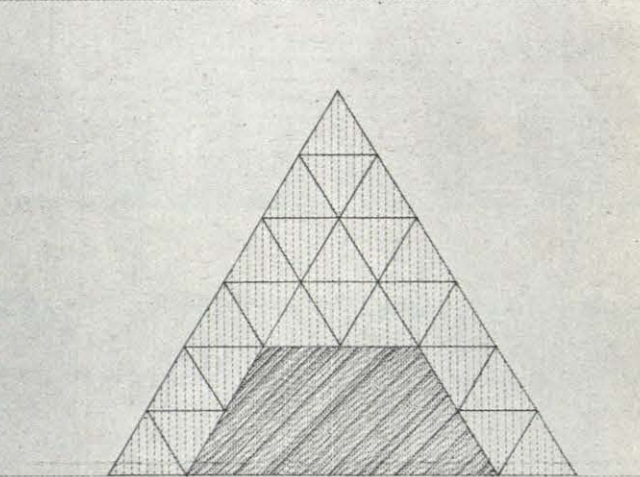
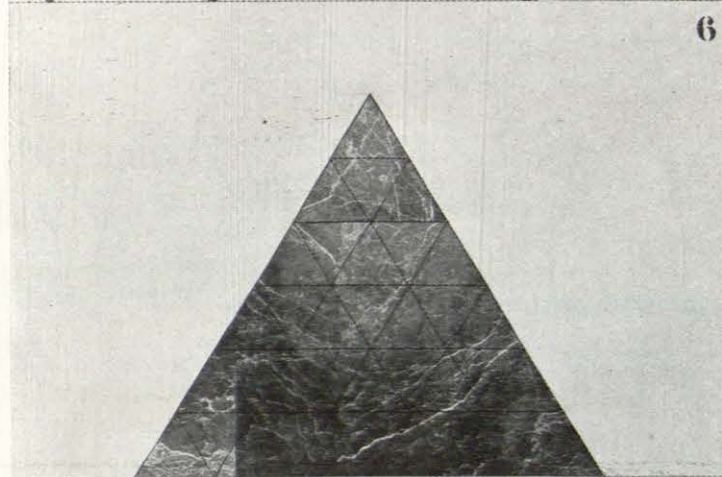
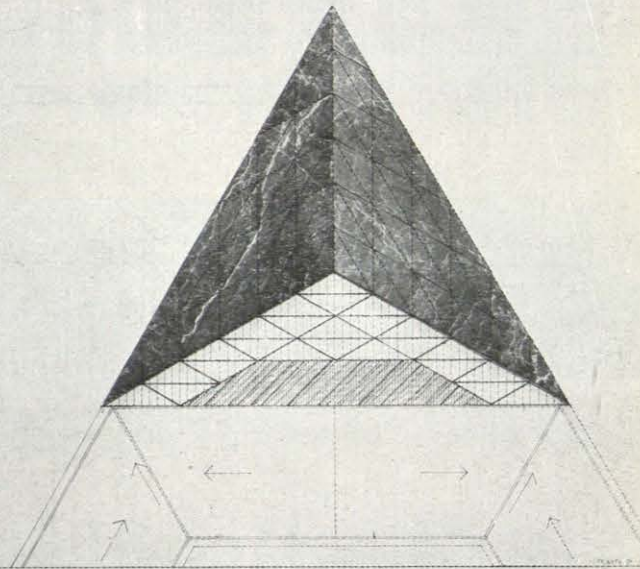
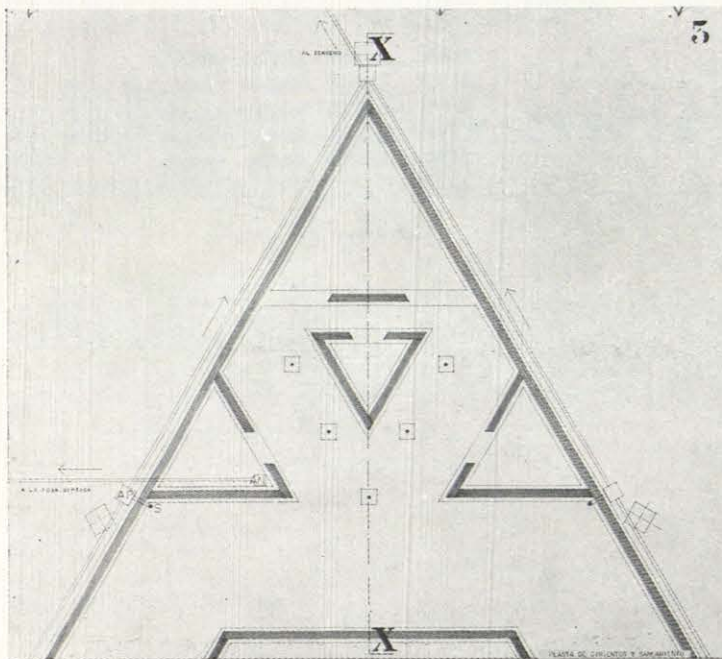


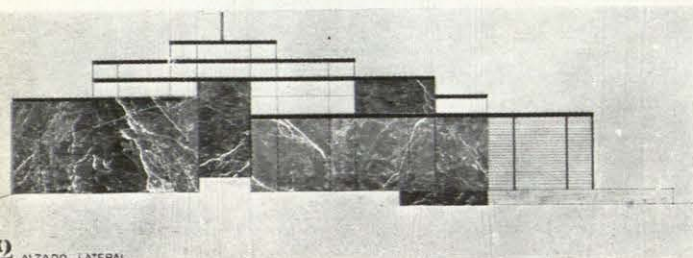
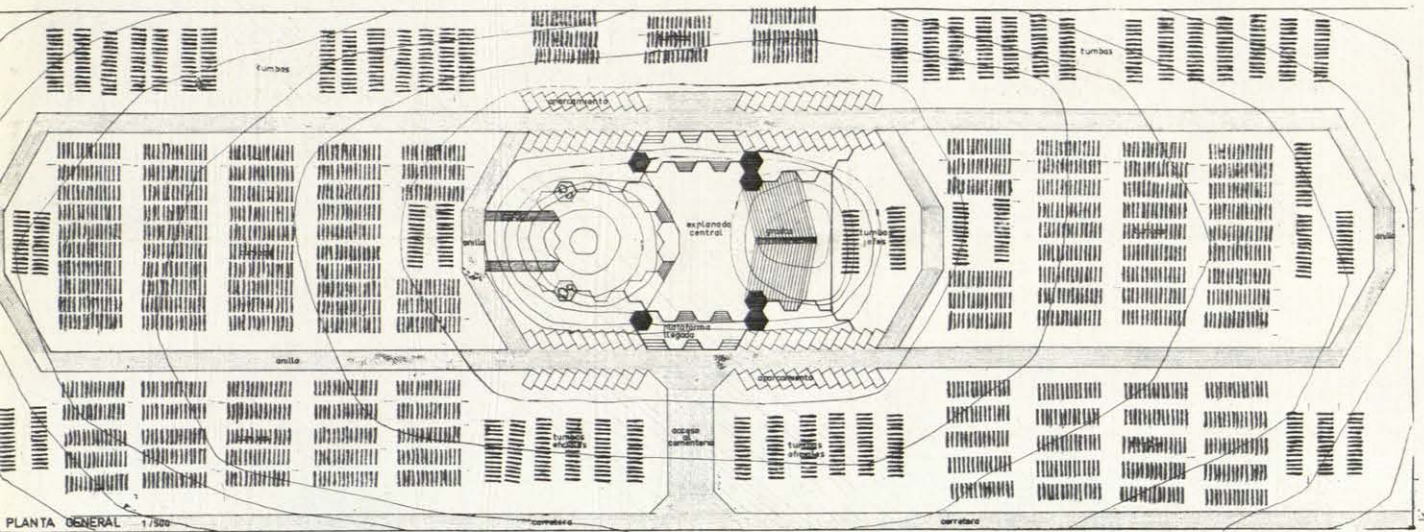


Heliodoro Dols-Morell

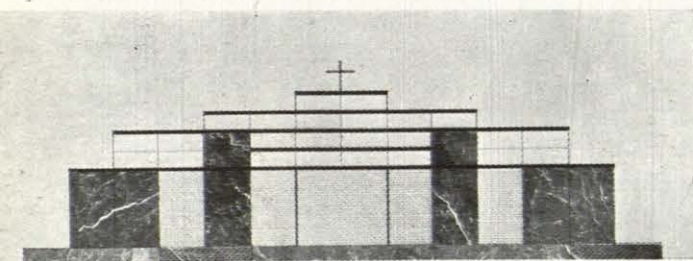




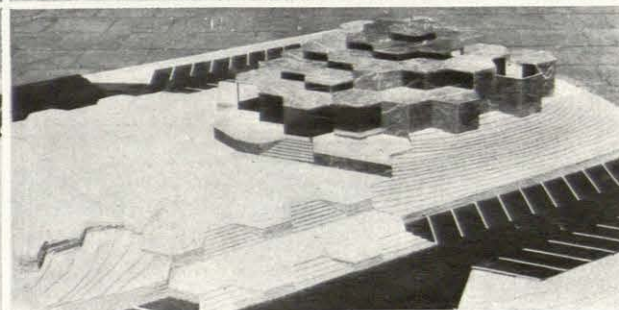
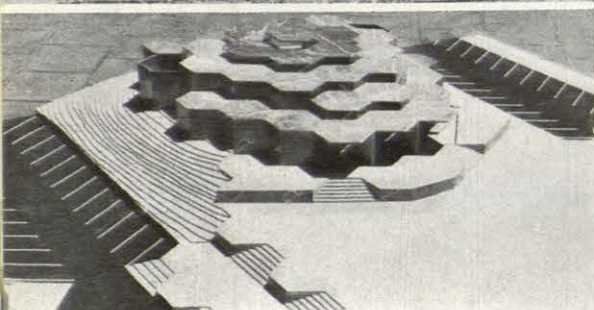
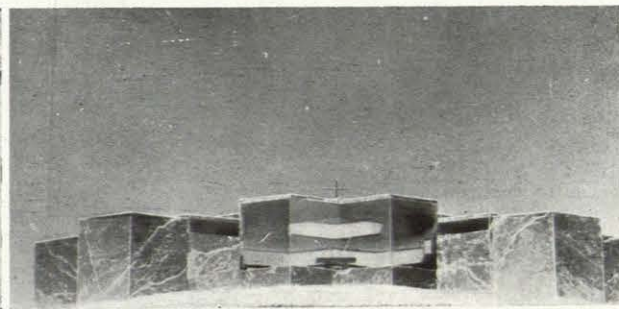
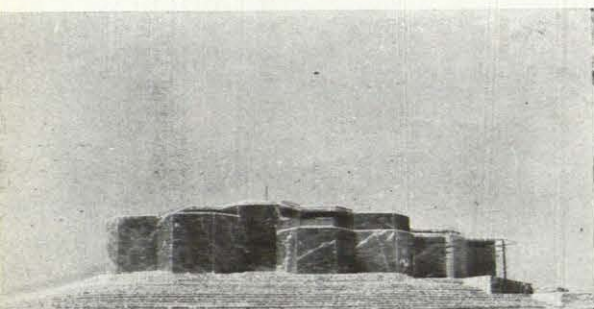


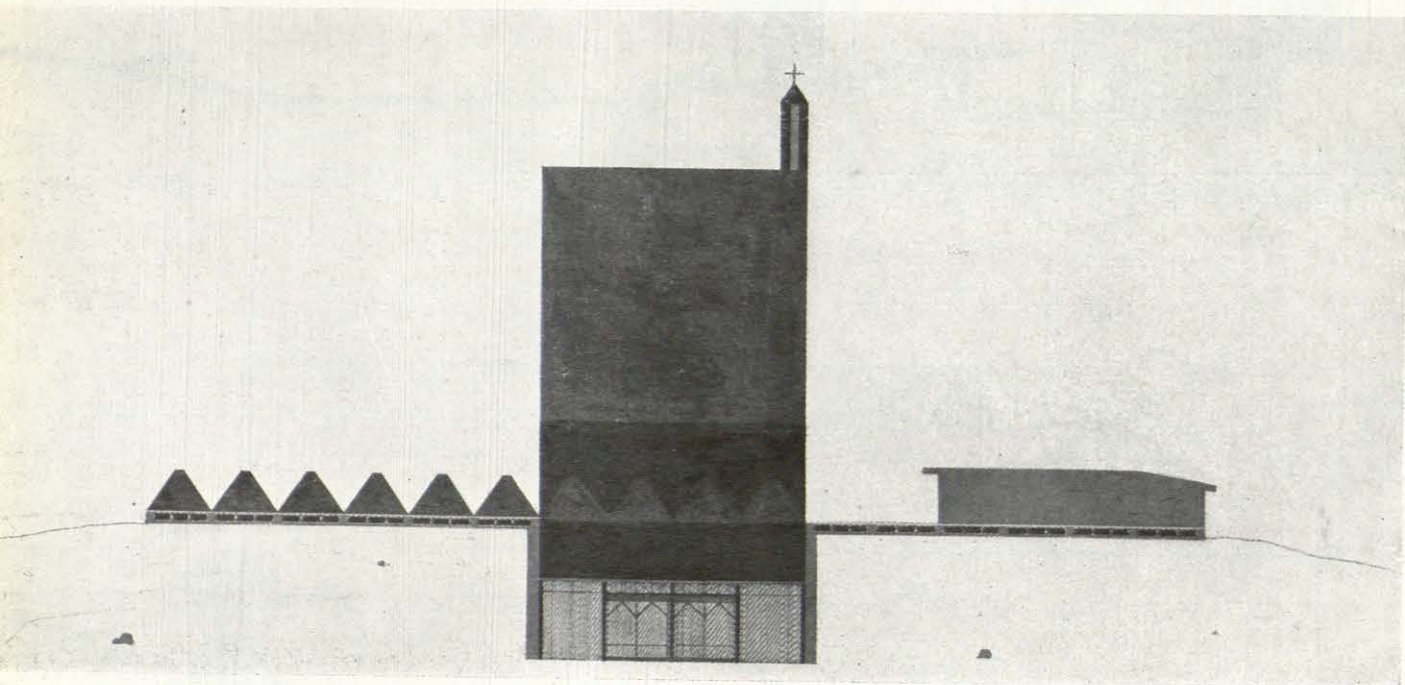
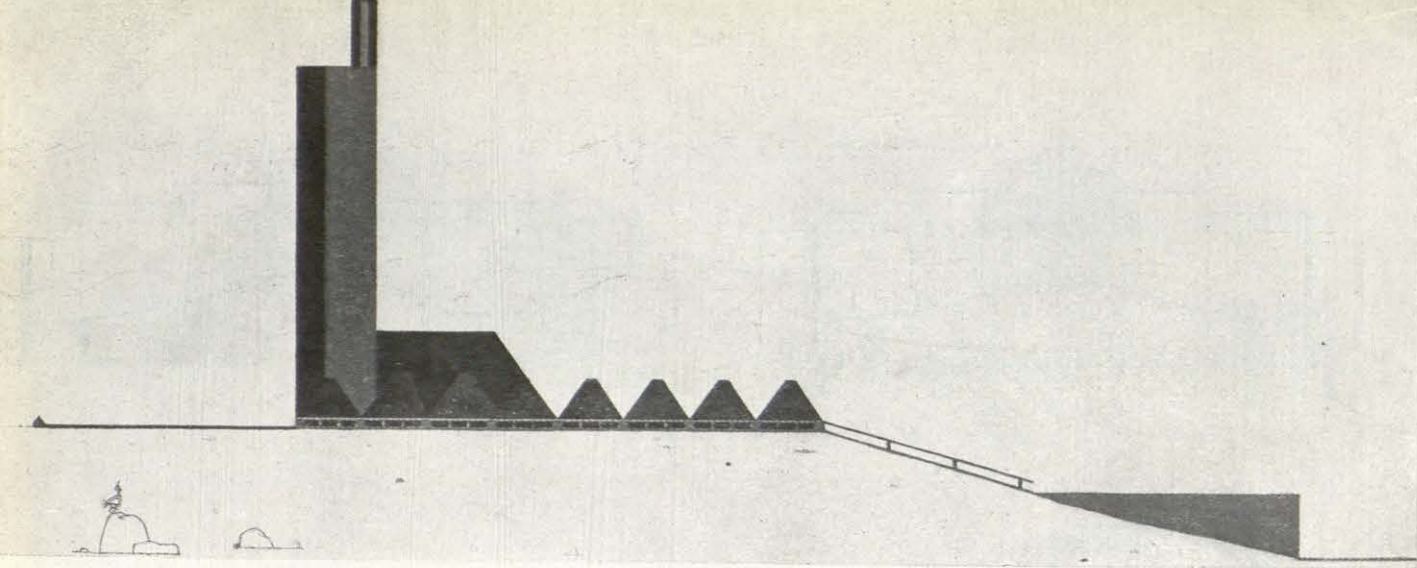


ALZADO LATERAL



Emilio M.^o de la Torriente Castro.



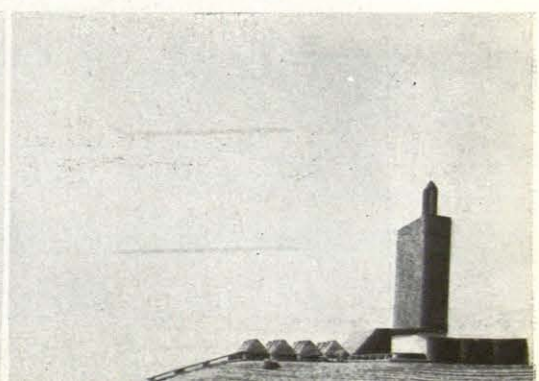
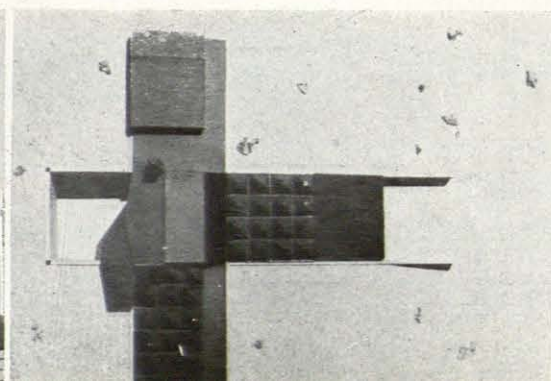
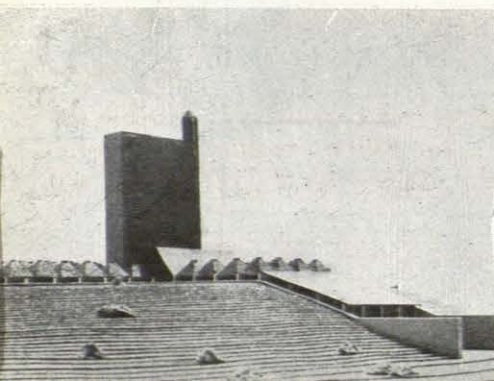


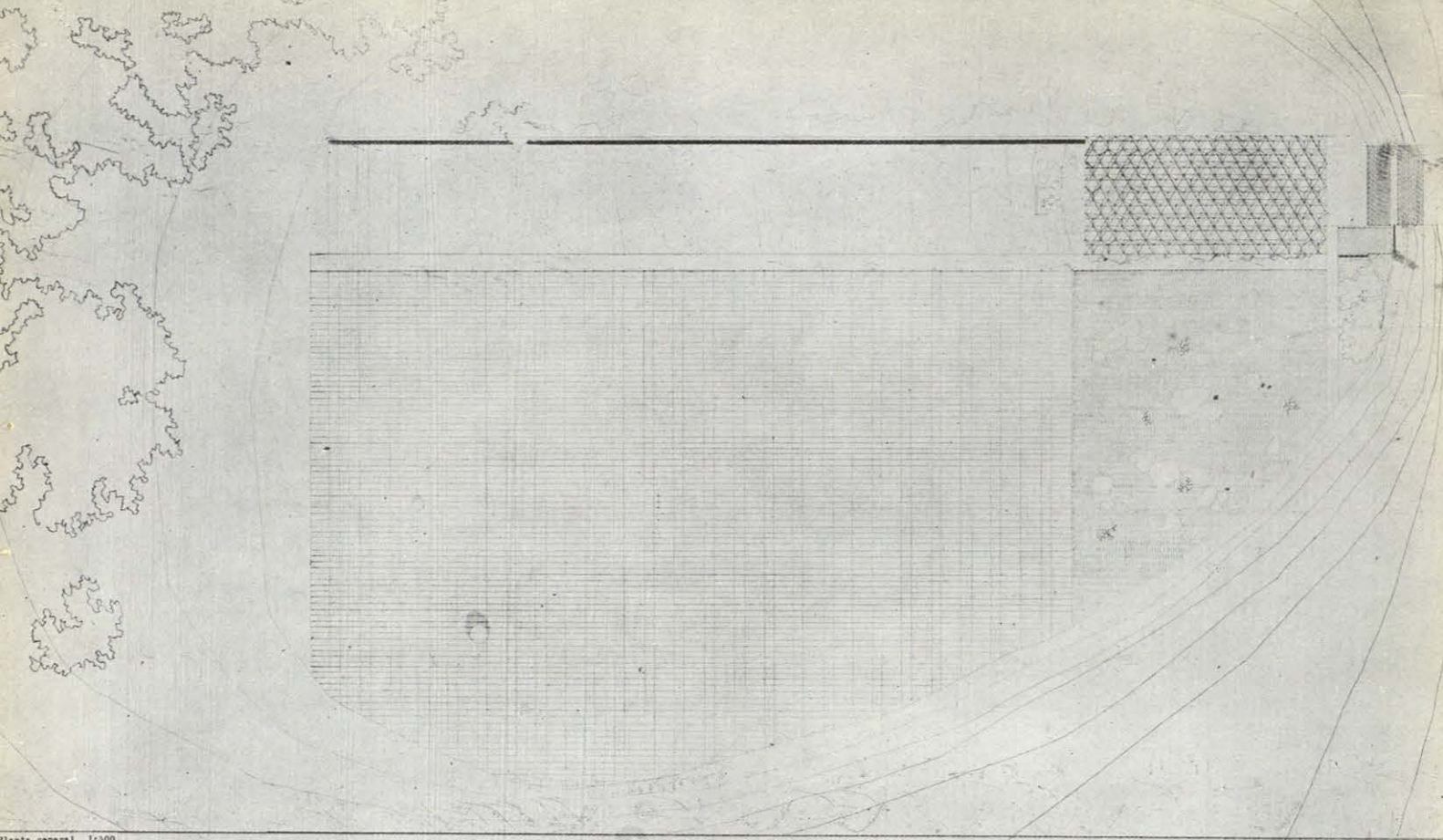
Memoria

Entre los cachos de piedra
 acostada de bruces a secar
 como una cruz con rodillas partidas.
 Medio hincada en la tierra
 y alzando el cuello al aire de los cielos.
 Del color de la piel de las castañas
 también de barro. Igual que las colmenas.
 Es así como son los picos de la cubierta
 —bien sorda de por sí
 y bastante agobiada de silencio—.
 Un niño le ha colgado una cometa
 que canta al sol casi llorando.
 Como las chicharras en verano.

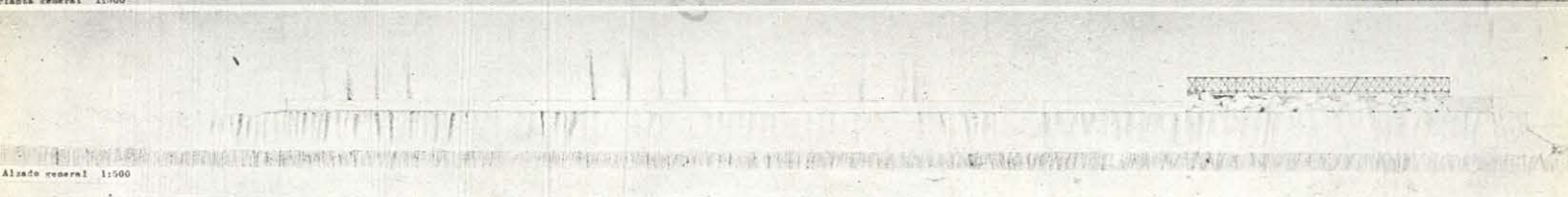
Debajo de la torre. Por lo bajo
 El sepulcro se asoma al foso un poco.
 El deja ver también el empedrado,
 los lagartos tirantes como agujas.
 Una misma corteza
 —un mismo barro cocido—
 la recubre por fuera y por dentro.
 Con los mismos colores además.
 El foso abre la tierra al sol.
 Está vacío.
 Y a los pies de la torre
 duelen los oídos de silencio
 de tan hueca y desnuda como está.

Francisco de Inza Campos



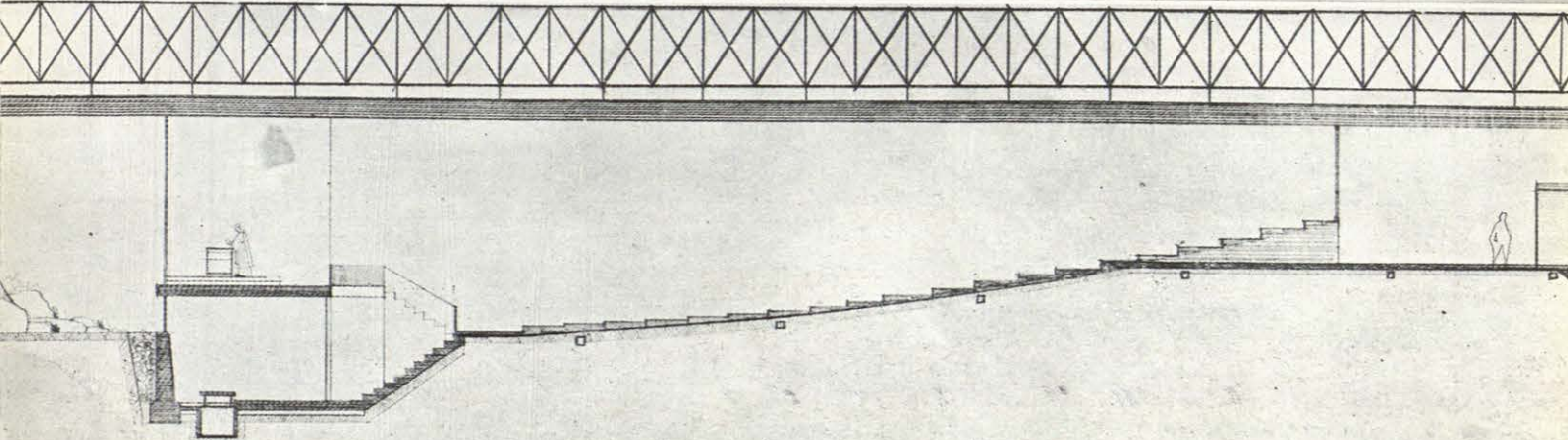
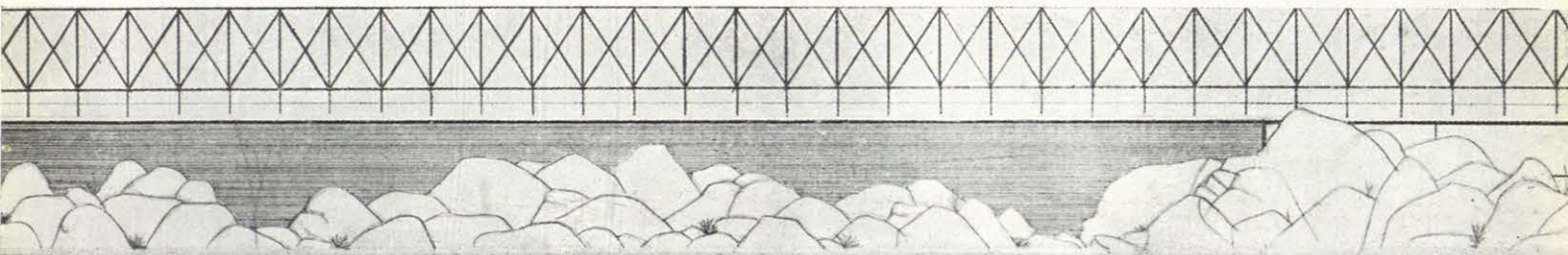


Planta general 1:500

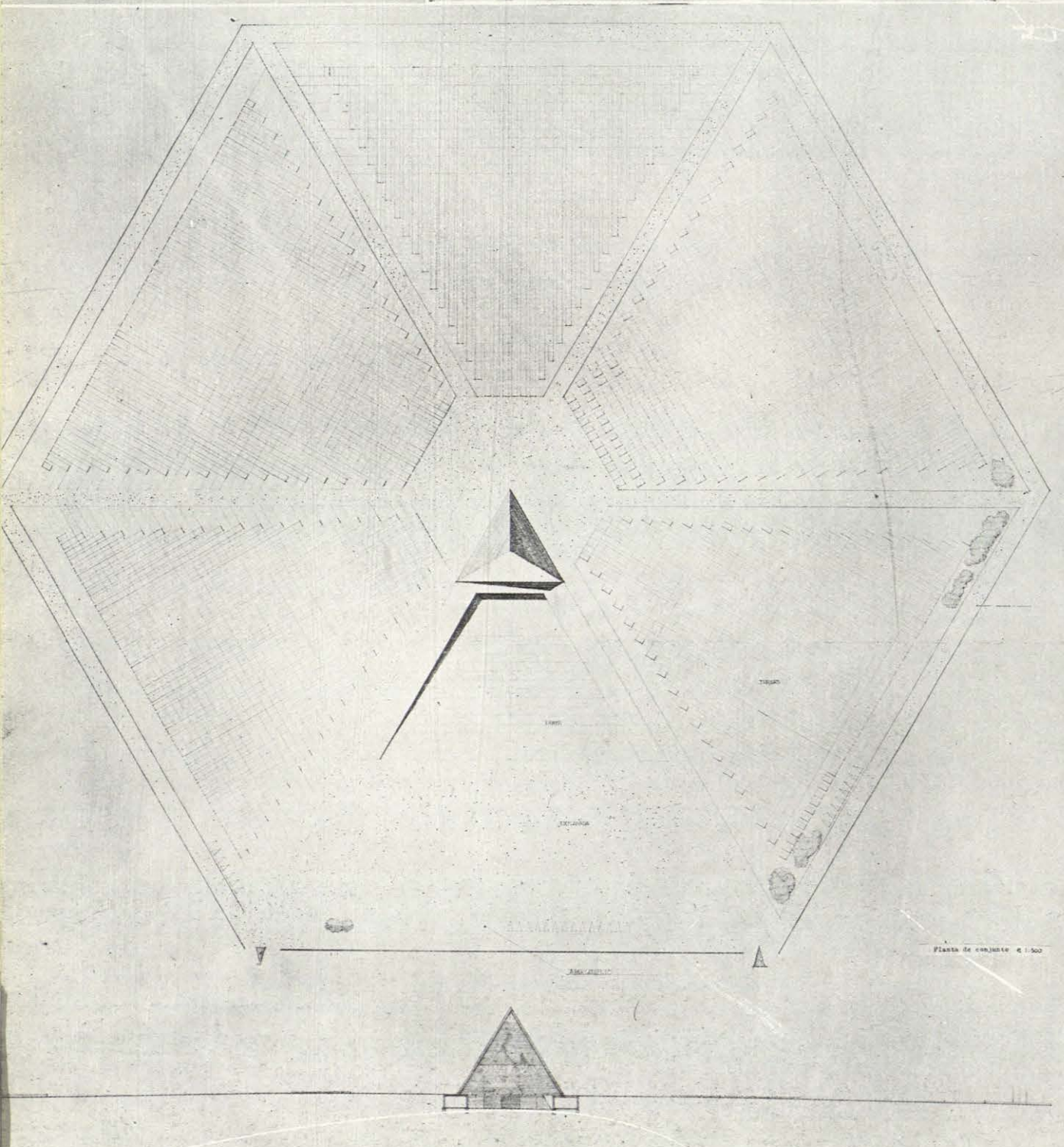
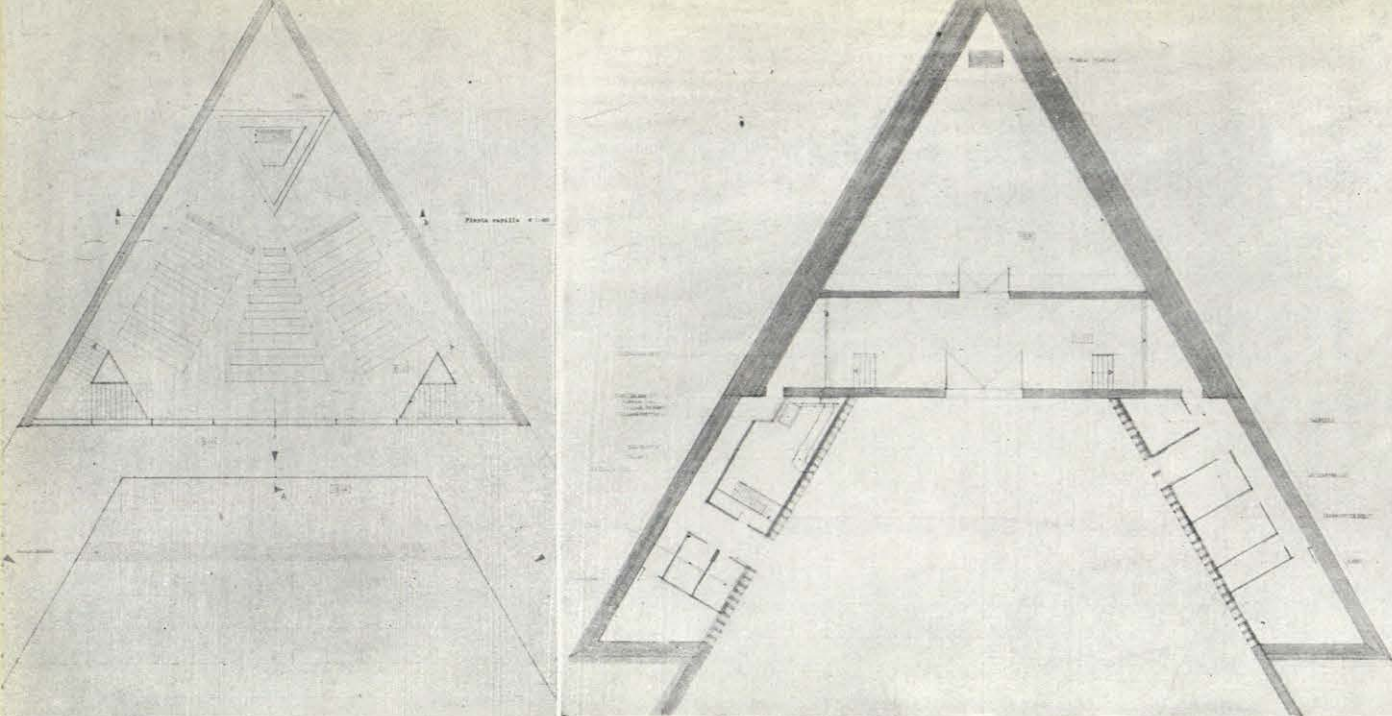


Alzado general 1:500

Juan Pedro Capote Aquino

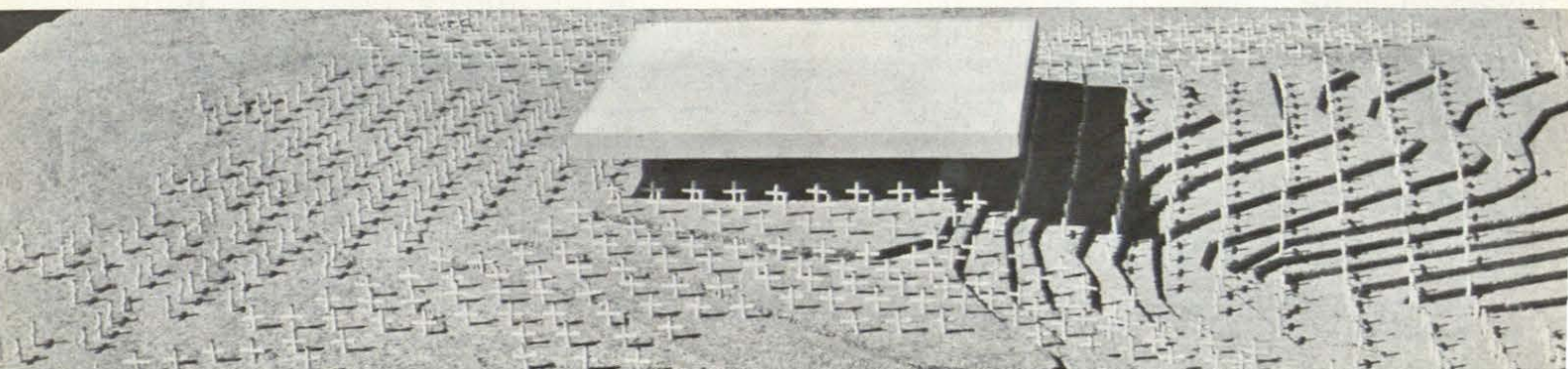


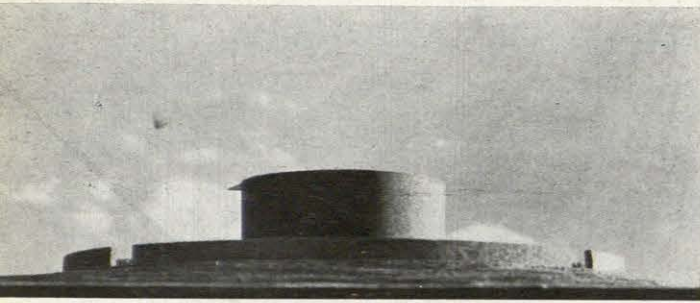
José Luis
Esteve
Balzola



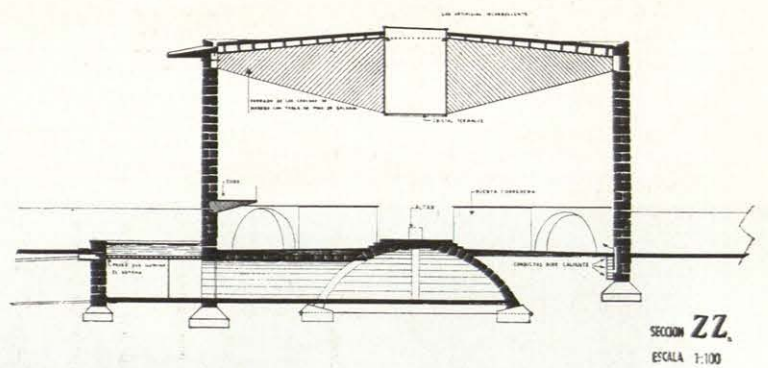
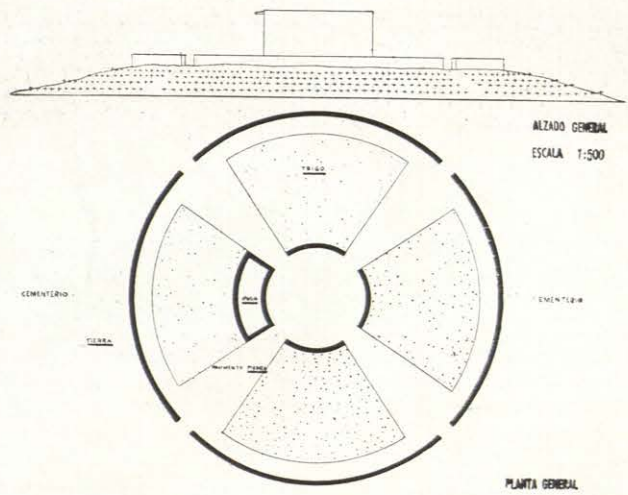
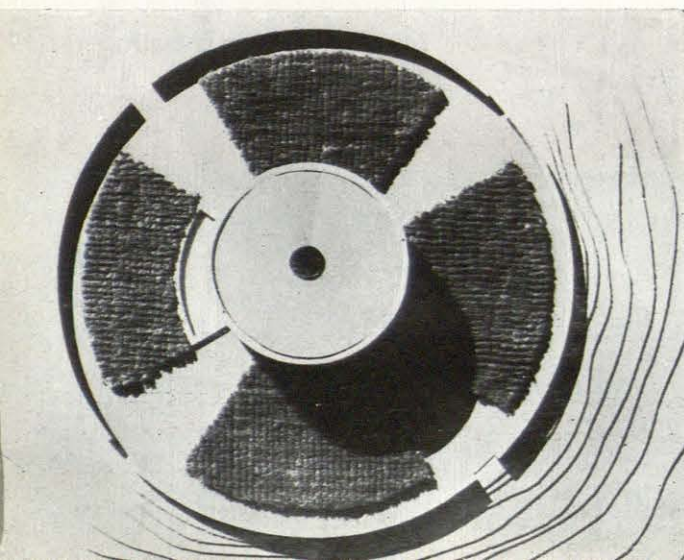
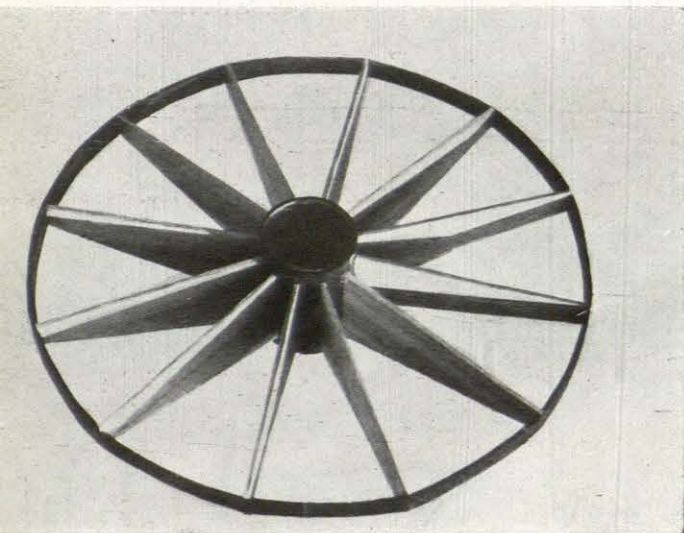
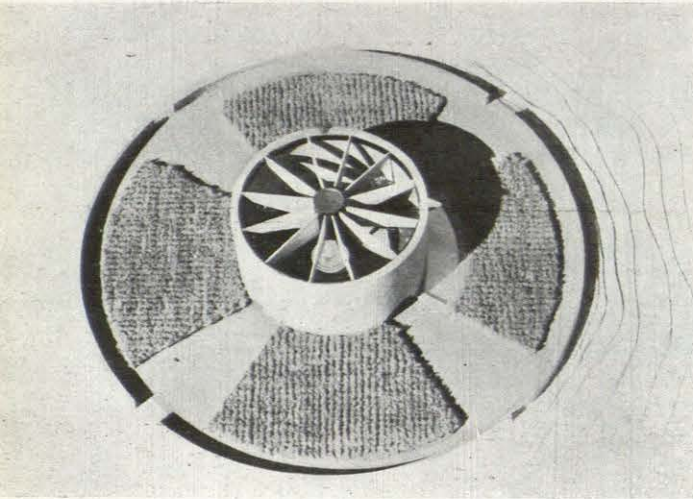


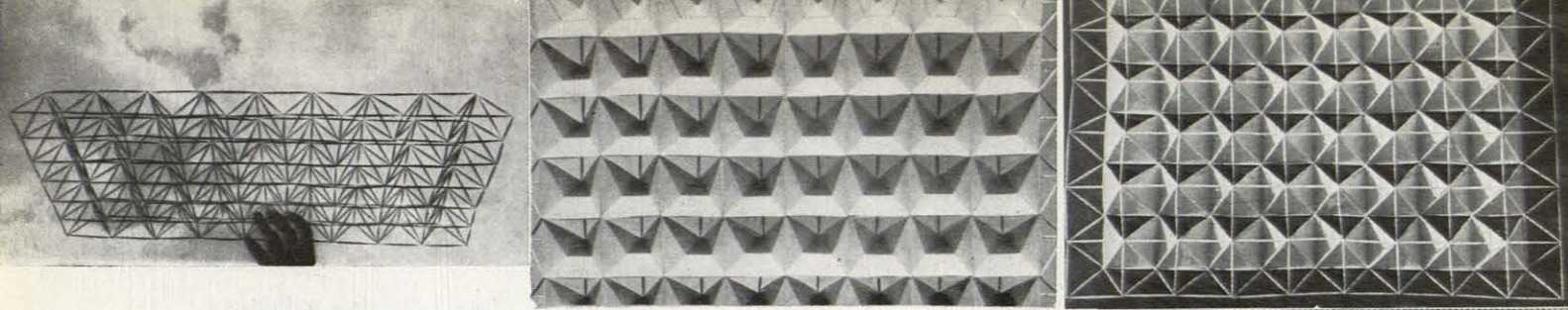
Javier Martínez Feduchi





Emilio Miguel Chinarro Matas





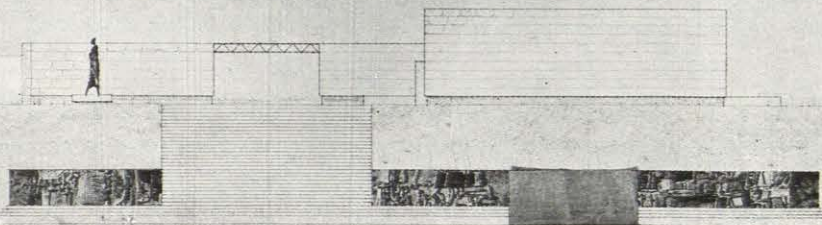
alzado E



alzado O

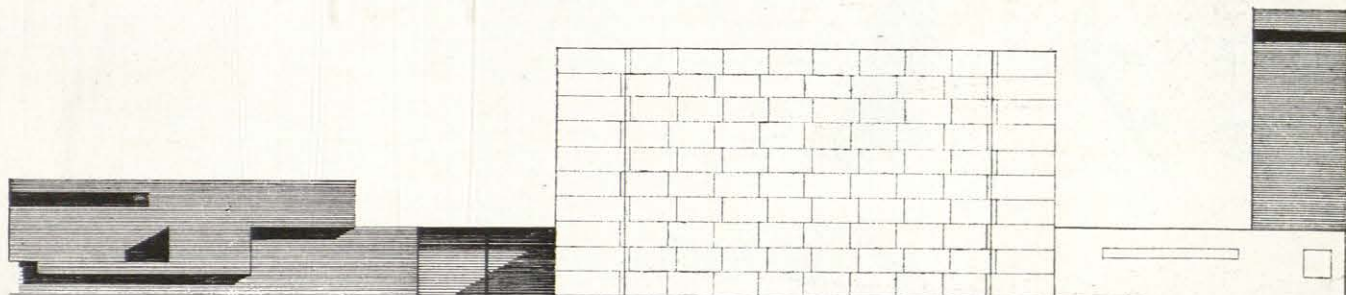


alzado N



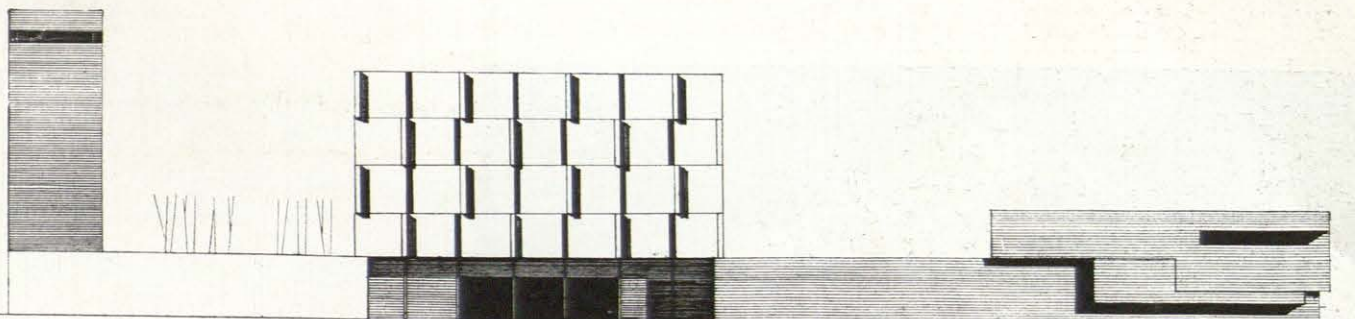
José Serrano-Suñer Polo

Pablo Arias García



ALZADO NOROCCIDENTE

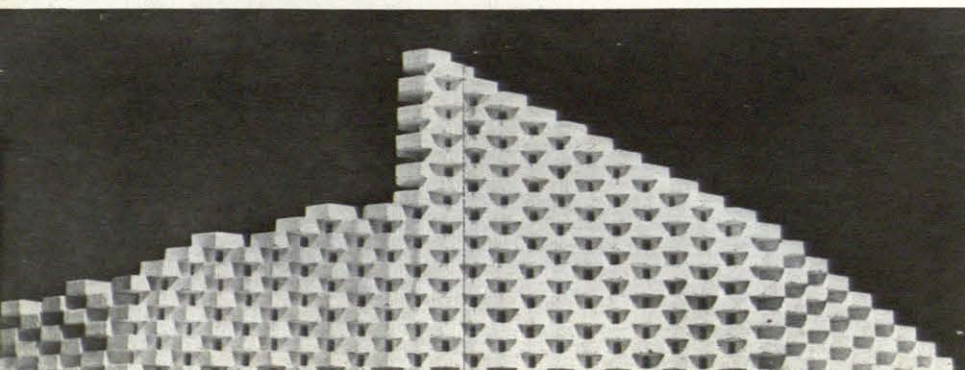
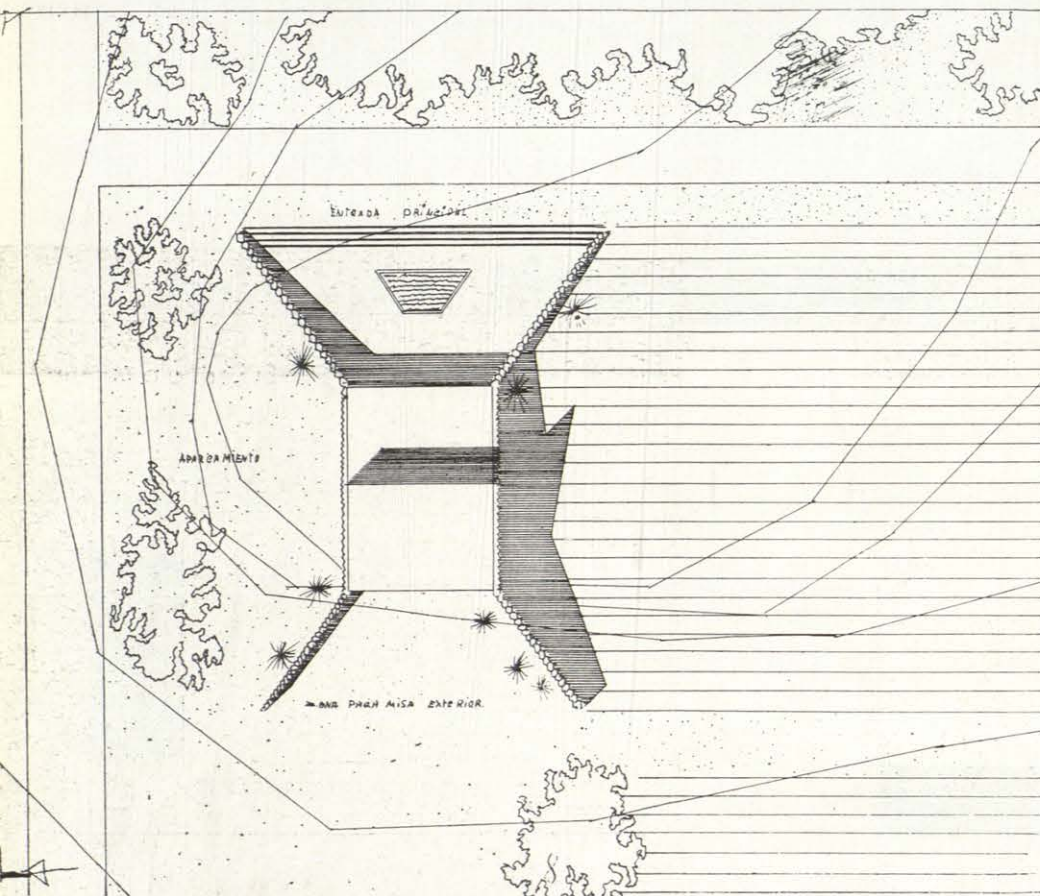
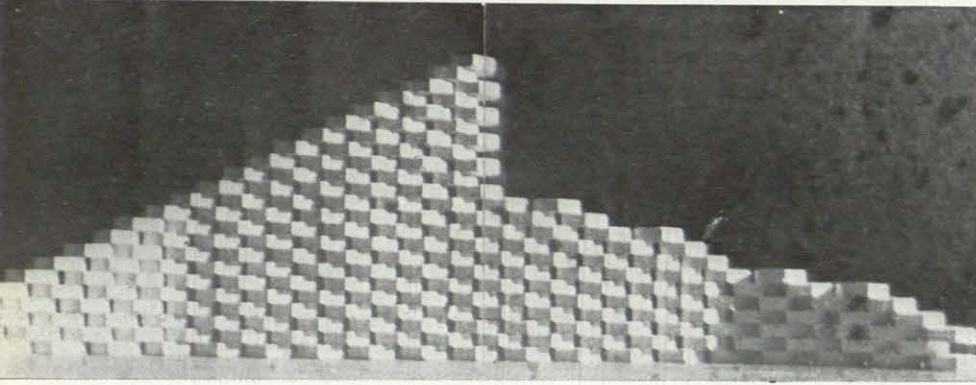
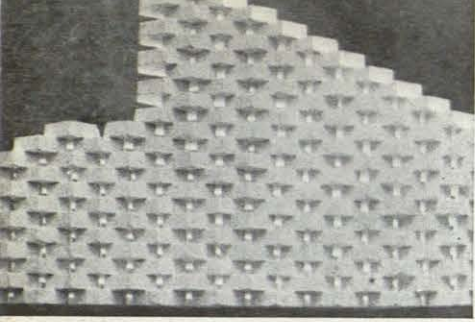
ESCALA 1:100

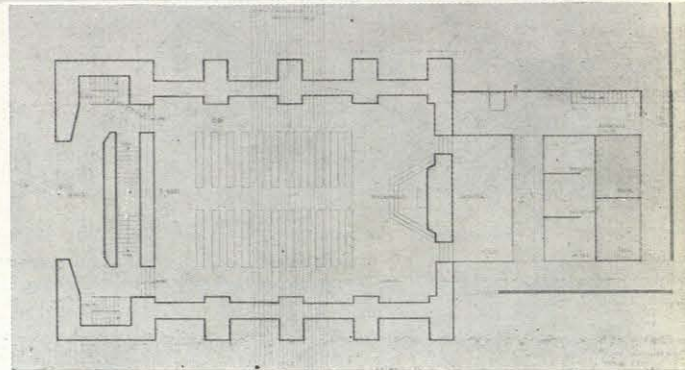
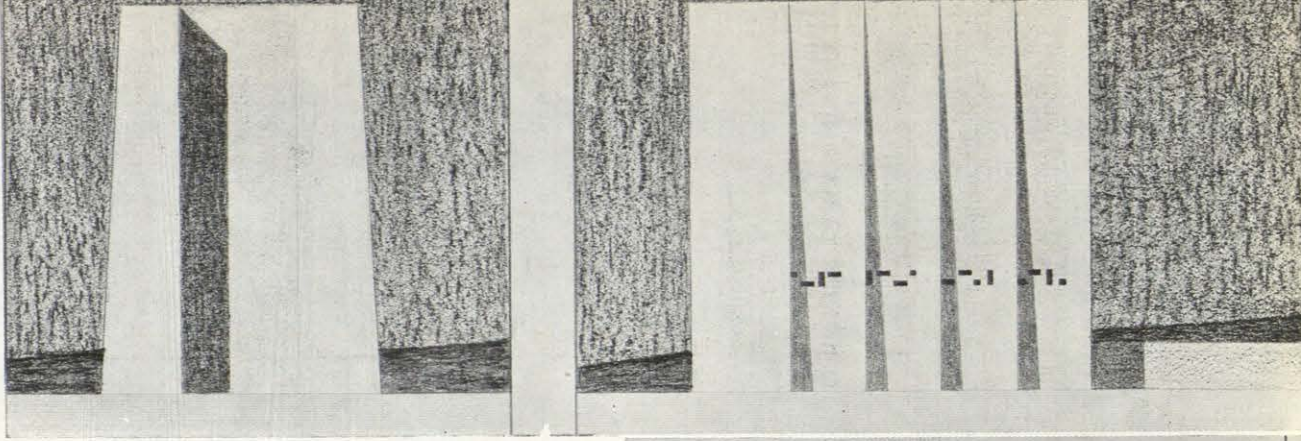


ALZADO SUR

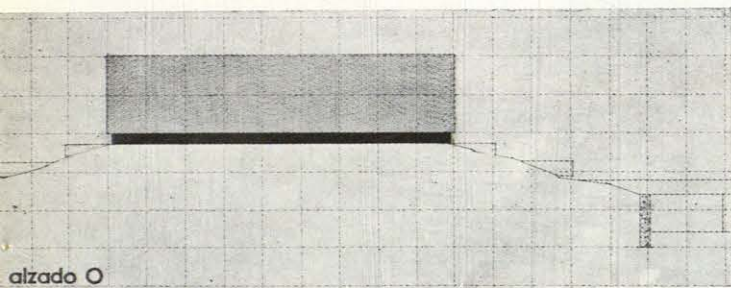
ESCALA 1:100

Vicente Orbe y Pinies

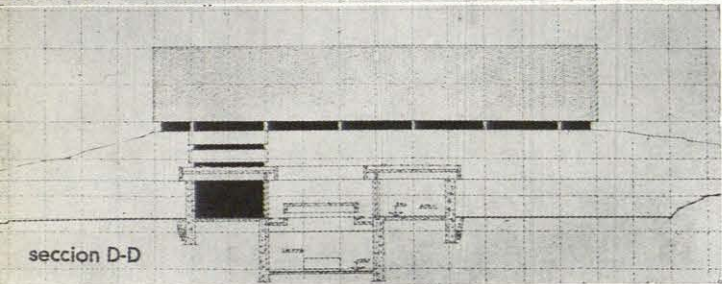




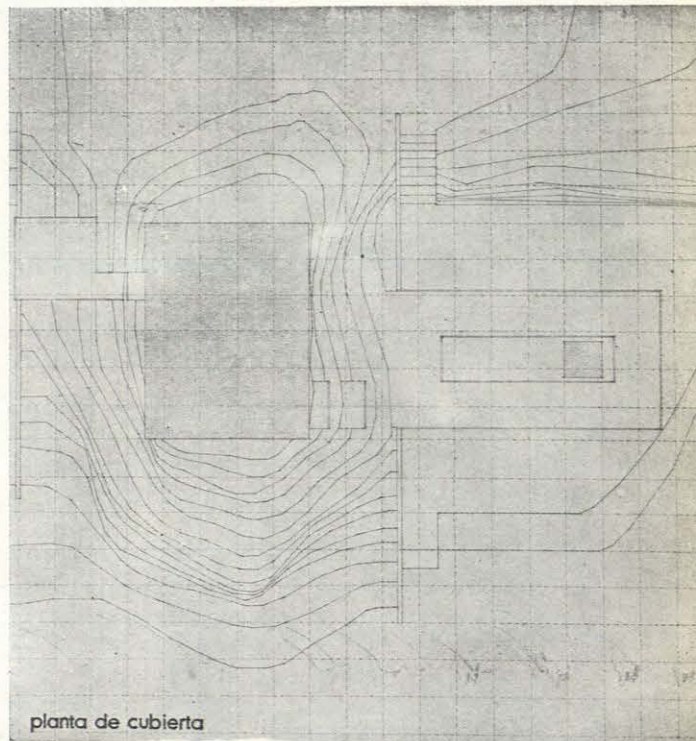
Manuel Sorige Fernández



alzado O

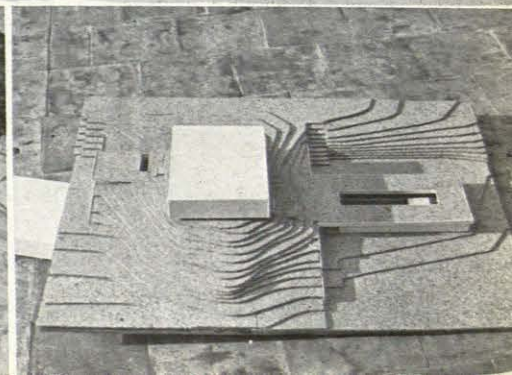
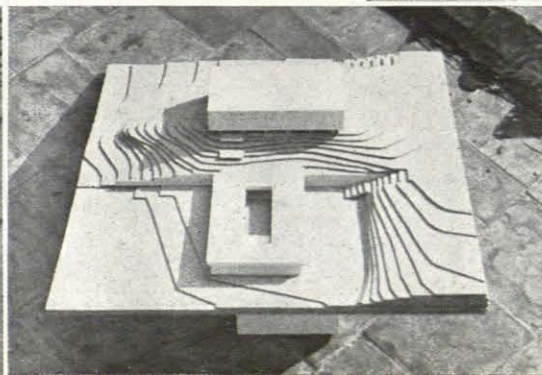
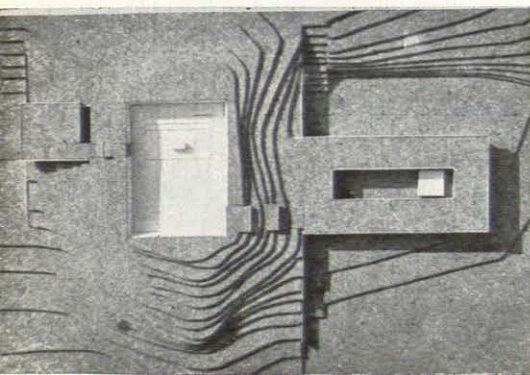


seccion D-D

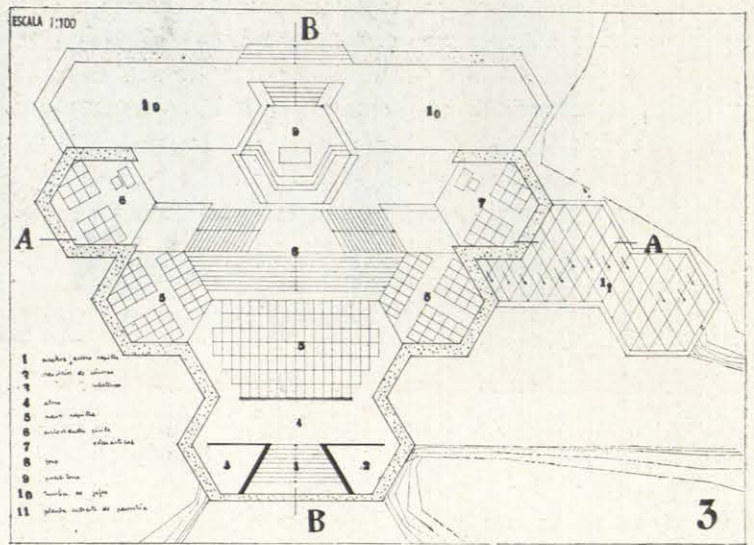
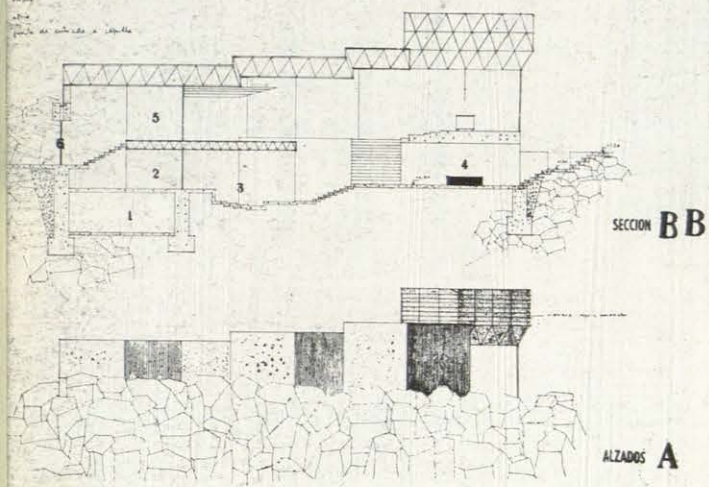


planta de cubierta

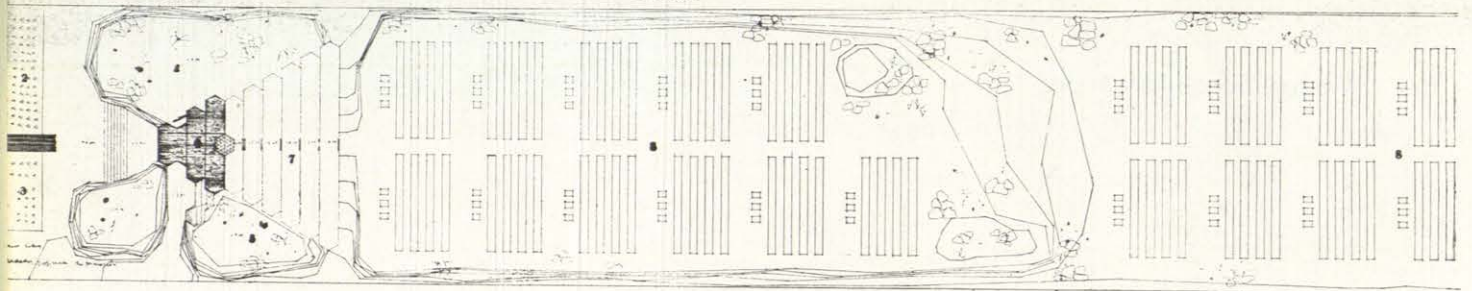
Eduardo Mangada Samain



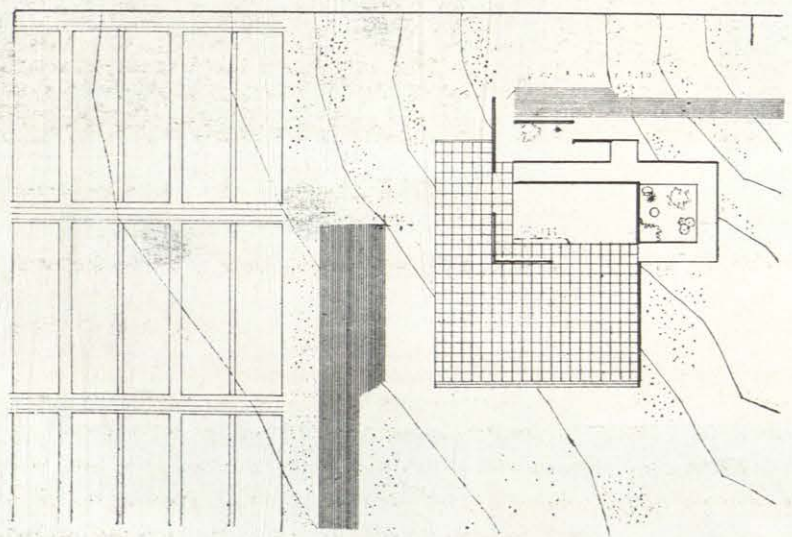
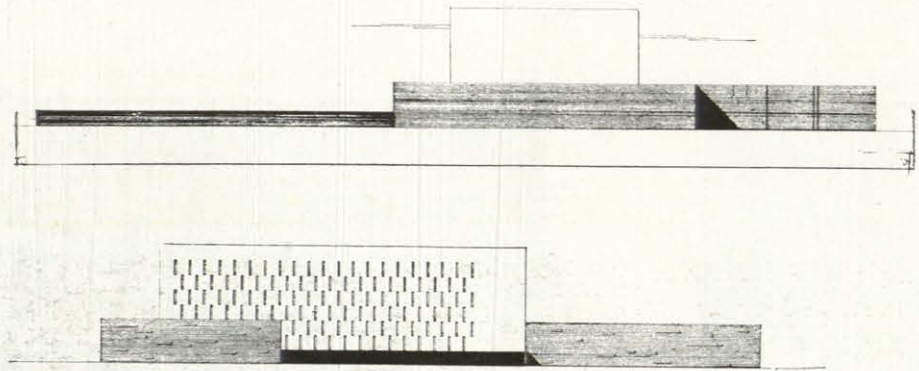
a) Tema de cubiertas
 b) Tema de muros
 c) Tema de suelos
 d) Tema de fachadas
 e) Tema de detalles de unión



5 ESCALA 1:100



Luis Peña Ganhegui



José M.º Martínez Diego