

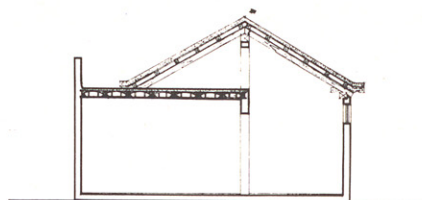
Juan Manuel RUIZ
DE LA PRADA
Arquitecto

Antonio ROMERO
Arquitecto colaborador

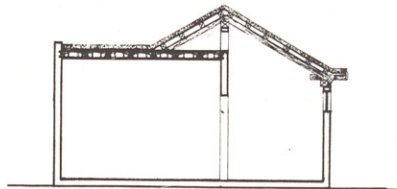
RESTAURANTE ISLETA Y RIA DE LA SANTA

Comienza: Abril 1970
Termina: Junio 1971

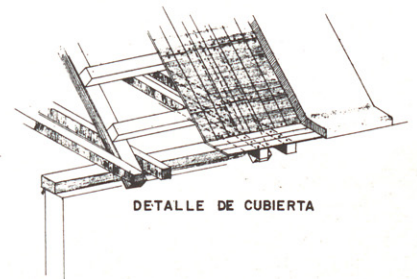
TINAJO. Lanzarote



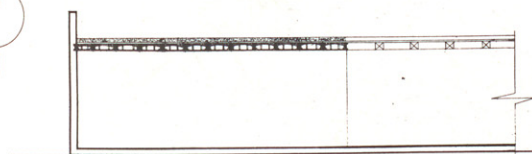
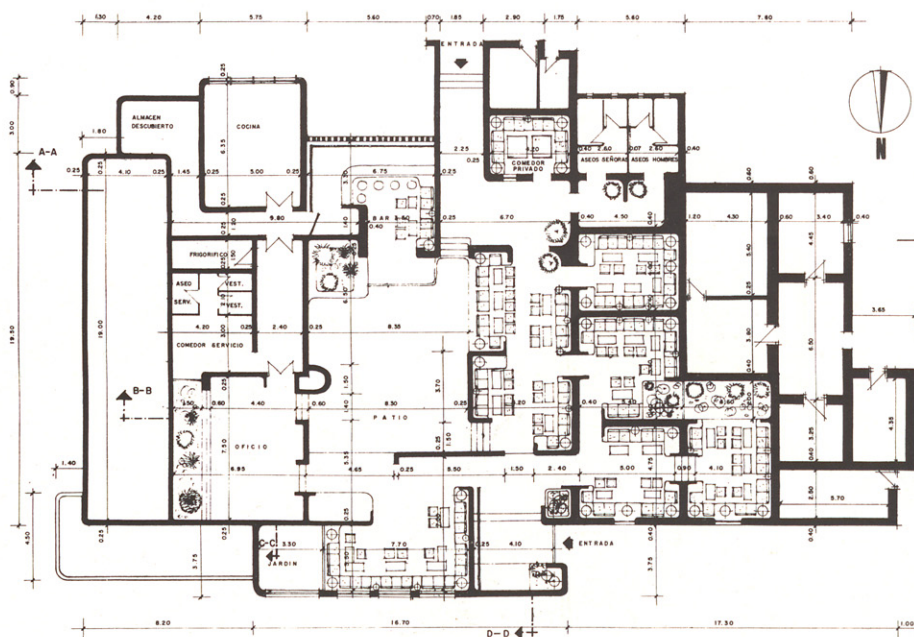
SECCION A-A



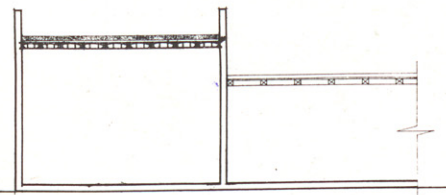
SECCION B-B



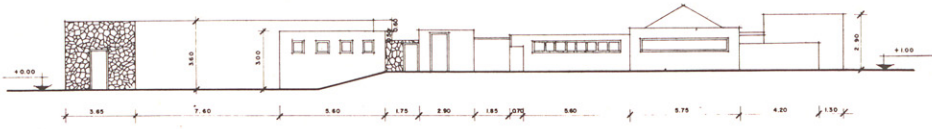
DETALLE DE CUBIERTA



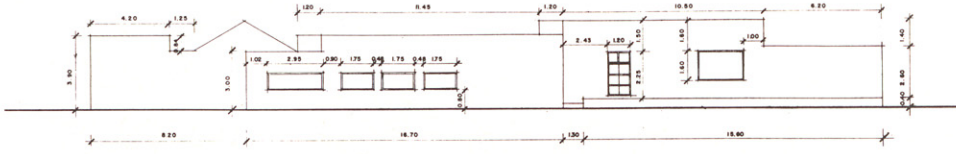
SECCION C-C



SECCION D-D



ALZADO SUR



ALZADO NORTE



