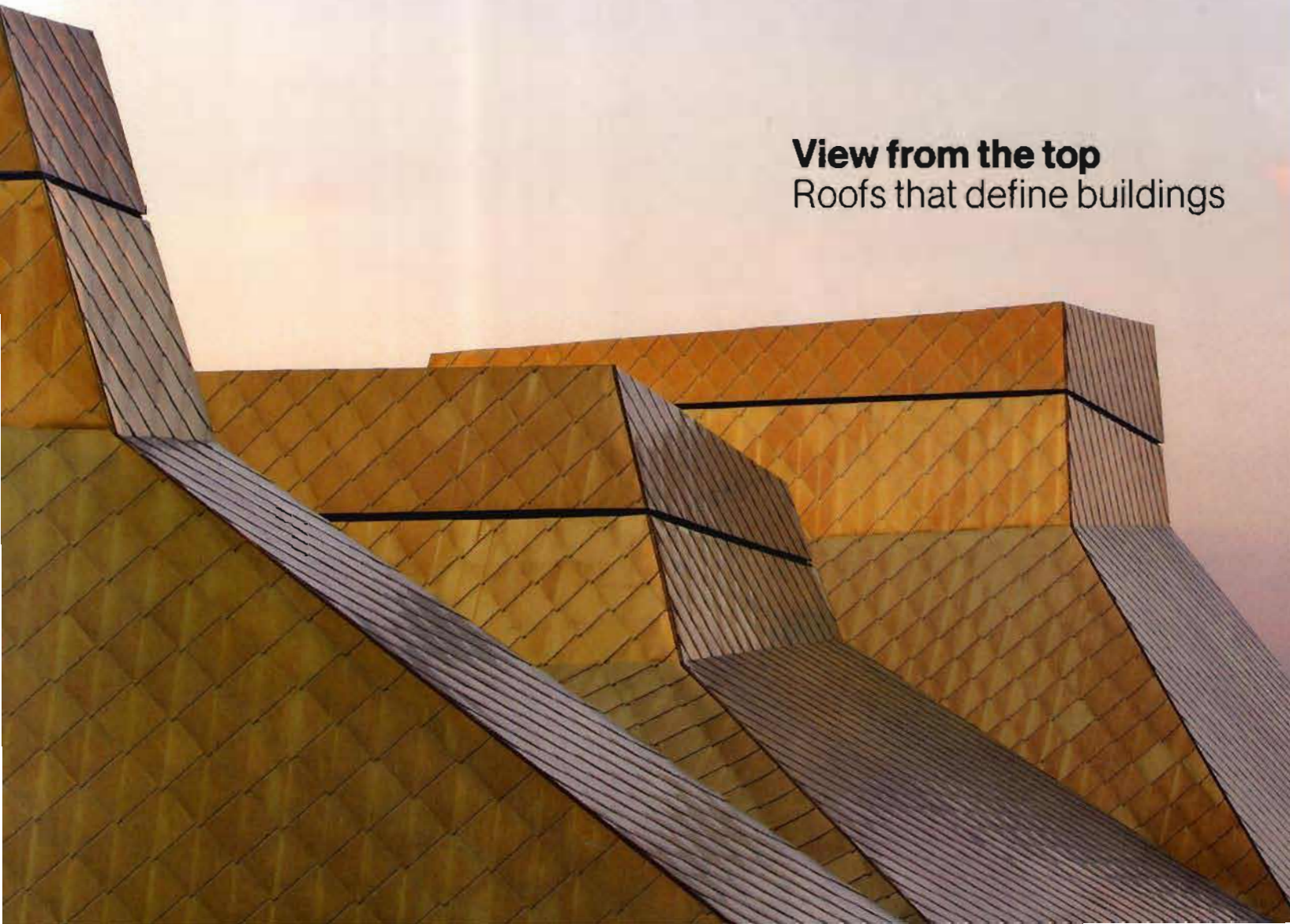




RIBA JOURNAL

APRIL 2012 | £5.50 | €19 | US\$20 | WWW.RIBAJOURNAL.COM

View from the top
Roofs that define buildings



The golden roofs of Feilden Clegg Bradley Studios' library the Hive in Worcester. Photo: Hutton & Crow.



04:2012

CONTEXT:

Leader : 07 With so much potential at the top of the building, flat roofs are pitching for business in a big way
Viewfinder : 08 Washed up with the fishing boats and nets of Hastings' shoreline is the Jerwood Gallery
The month : 10 Tyne water sculpture, Liverpool Waters, Norfolk Long House, King's Cross roof
RIBA brief : 13 Architect in the house, Norwegian season, conservation course, PII warning, events
Obituary : 16 Robert Elwall, RIBA photographs curator of legendary authority
Perspective : 18 Chelsea Harbour, Parker Morris recommendations and architects' egos under fire
Out there : 20 The Community Cooker slays two third world issues at once – rubbish and power
RIBA issues: 23 Angela Brady talks to four experts about how to improve and speed housing provision
Preview : 27 Before the United Arab Emirates embraced high rise, palm leaf structures held sway
Review : 28 How buildings battle weather, from the Elizabethan Robert Smythson to Peter and Alison
Listings : 30 What's on and when
Letters : 32 Welcome words, no room for RIBA factions, Scots answer back, Cullinan query

ANALYSIS:

Profile : 34 A culture of uniting opposites seems to be paying dividends for Project Orange, whose love of contradiction and contrast is revealed most vividly in its differently-capped Sheffield successes
Critique : 40 Worcester's ragged city boundary has been punctured by the gleaming gold roof of the Hive, Feilden Clegg Bradley Studio's new library designed to welcome all types of reader
Rethink : 50 As ways to give the city green lungs move on in leaps and bounds with the technology to plant buildings' roofs and walls, cloaks of greenery are enriching the urban realm
Process : 52 In the windswept landscape of the Thames estuary crouches van Heyningen and Haward's visitor centre for Essex Wildlife Trust, studiously concealing its bird-watching occupants

INTELLIGENCE:

Technical | Editorial : 59 Jan-Carlos Kucharek introduces this month's intelligence offerings
Technical | Heritage : 60 Birmingham University's missing fourth faculty building has been completed
Practice | Benchmarking : 62 A wider remit gives this year's RIBA survey a clearer view of the profession
Practice | CPD : 64 So significant will the impact of the Localism Act be that getting to grips with it is vital
Practice | Regulations : 66 We pick out the main points of the 2012 Building Regulations consultation
Practice | Legal : 68 Deeming clauses, which aim to contain disputes, have been clarified by the court
Practice | Real lives : 70 A beta tester for NBS Create tells his story. Plus Craig White's diary
Regional focus | South West : 73 Self-build is becoming more popular but is it a money spinner?

PS:

Parting shot : 82 We remember Robert Elwall, master of this page and the RIBA photographic collection

'Architects arrive on the plane, go to the office, then get back on the plane. There is no exploring' **Sandra Piesik in Dubai : 27**



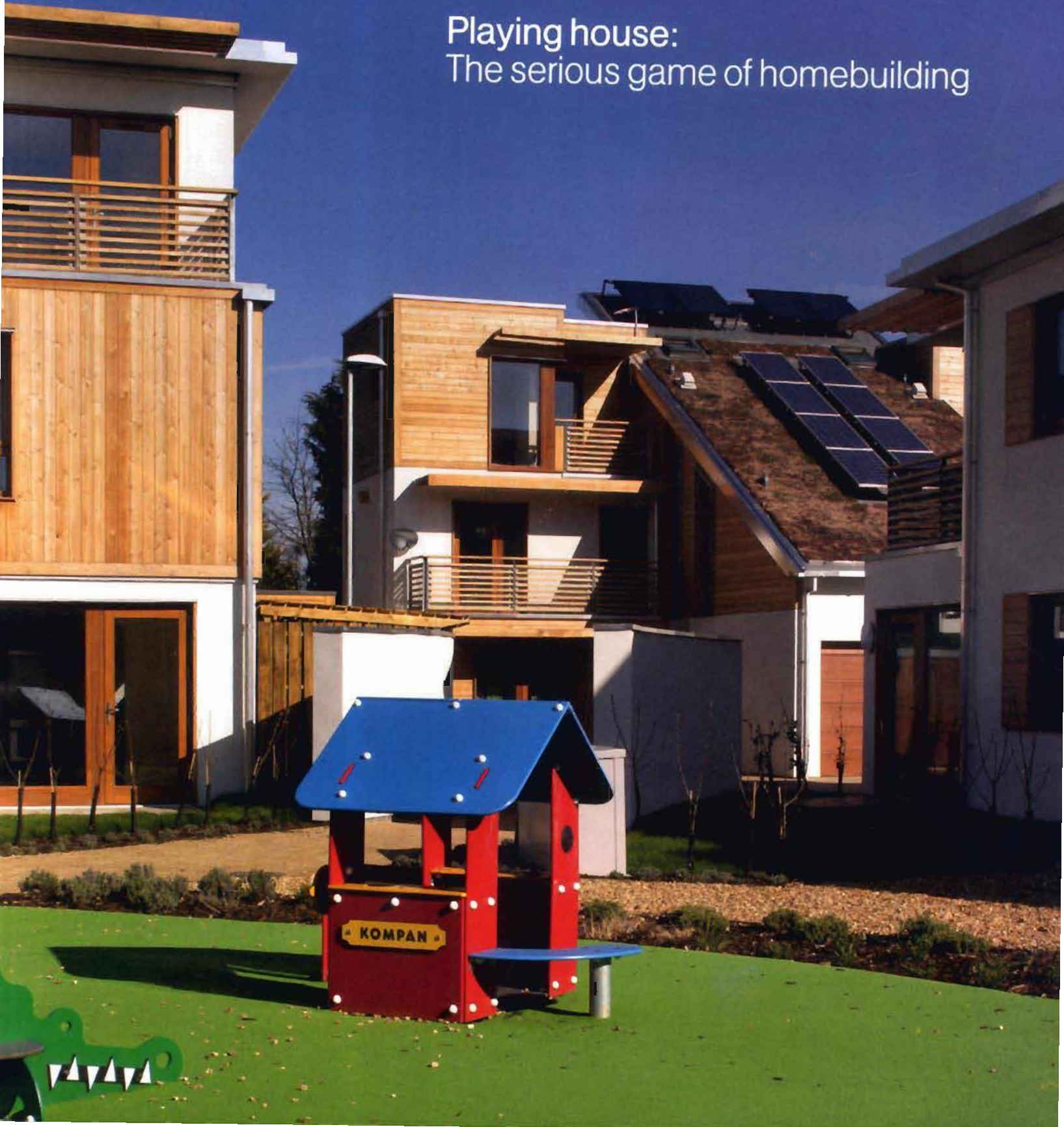
More content at:
RIBAJOURNAL.COM

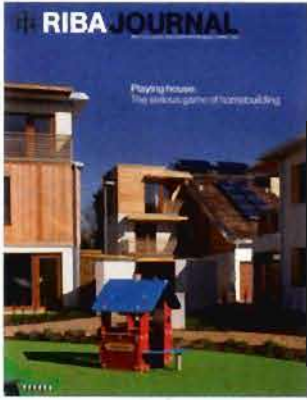


RIBA JOURNAL

MAY 2012 | £5.50 | €19 | US\$20 | WWW.RIBAJOURNAL.COM

Playing house:
The serious game of homebuilding





Letchworth's 'Garden City 21' enclave by Cole Thompson Anders and others, p40. Photo: Morley von Sternberg

05:2012

CONTEXT:

Leader : 07 Housing is a thorny issue in the UK from every angle, but there are some positives out there
Viewfinder : 08 Bolam Coyne on Newcastle's Byker Estate has been refitted, and to Code level 3
The month : 10 Battersea again, German culture link, Chinese hit town, Summer show, Horniman pavilion
RIBA brief : 13 RIBA's election manifesto, multi-faith spaces, plus events and awards round the regions
Obituary : 16 John Madin, brutalist architect of the controversial Birmingham Library
Perspective : 18 McAslan on the media, housing the old, the bane of foreign competition
Out there : 20 There simply aren't enough homes in Britain despite hundreds of government initiatives
RIBA issues : 23 Angela Brady discusses the value of competitions and rejects the charge of high costs
Preview : 27 Basil Spence has been undervalued for too long and this overview sets that right
Review : 28 Joining the 2012 excitement the V&A showcases 60 years of great British design
Listings : 30 What's on and when
Letters : 32 Competition disappointment, misleading fees stats, save York from out-of-town

ANALYSIS:

Profile : 34 Isabel Allen has returned to her architectural roots as design director of Kevin McCloud's HAB Homes. It was a steep learning curve but she's relishing every minute of it
Critique : 40 Letchworth's town meets country ideals have dissipated as the last century has seen it become a commuter town, but a housing scheme that values the public realm offers a return to rurbania
Rethink : 51 There's little doubt that prefabrication has much to offer, yet it never quite seems to take off. Now a funding system that gives social housebuilders cheap loans could change all that
Process : 56 Gateshead's municipal ambitions are clear and its use of architecture to help further them includes a long term scheme to develop pockets of high design quality housing across the town

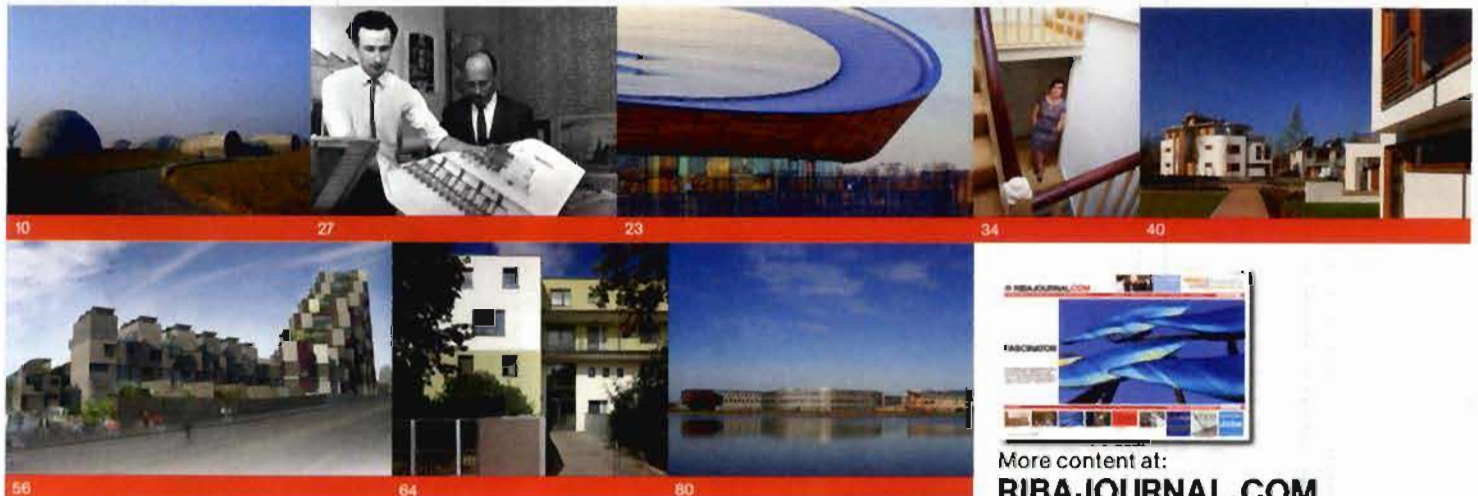
INTELLIGENCE:

Technical | Editorial : 63 Eleanor Young introduces this month's intelligence offerings
Technical | Housing : 64 Refurbishing an east London housing estate was demanding but paid off
Practice | Community cohesion : 69 Really integrating our society requires a new approach
Practice | CPD : 72 Designing, understanding the technologies, and communicating what's needed
Practice | Planning : 74 Properly used, design and access statements have much to offer
Practice | Legal : 76 Making arrangements does not necessarily mean making it happen
Practice | Real lives : 78 'Live Projects' gives students invaluable experience. Plus Craig White
Regional focus | Yorkshire : 80 Commissioning York Uni's second campus sparked a love of architecture

PS:

Parting shot : 90 Basil Spence's optimistic 1950s redevelopment of Glasgow's Gorbals was short-lived

'We fund, we build, then we lease' housing finance specialist Peter Mahoney : 51



More content at:
RIBAJOURNAL.COM